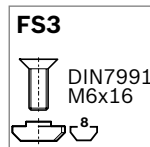
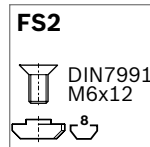
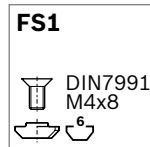
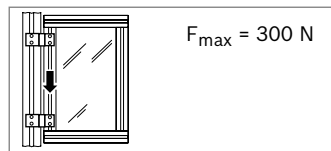
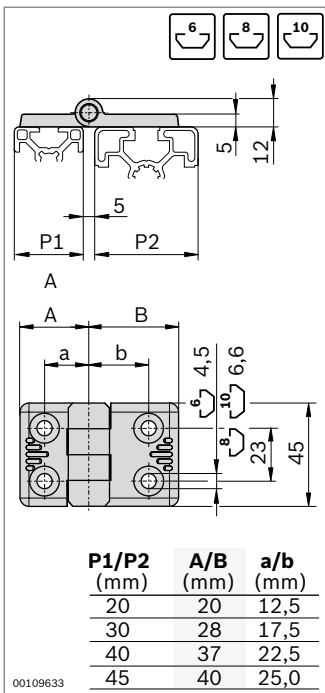


Hinge, aluminum



- ▶ Aluminum hinge for all slot systems
- ▶ Assembly possible on solid surface elements
- ▶ High-quality version
- ▶ Conductive version
- ▶ Suitable for use under cleanroom conditions thanks to wear-resistant guide bushings



Hinge, aluminum	P1 (mm)	P2 (mm)	ESD	No.	FS
	20	20	ESD	2 3 842 544 525	4xFS1
	20	30	ESD	2 3 842 544 526	2xFS1, 2xFS2
	30	30	ESD	2 3 842 544 527	4xFS2
	30	40	ESD	2 3 842 544 528	2xFS2, 2xFS3
	30	45	ESD	2 3 842 544 529	2xFS2, 2xFS3
	40	40	ESD	2 3 842 544 530	4xFS3
	45	45	ESD	2 3 842 544 531	4xFS3

Material: Diecast aluminum; nickel-plated
Fastening material: steel; galvanized
Scope of delivery: Incl. fastening material (FS)

