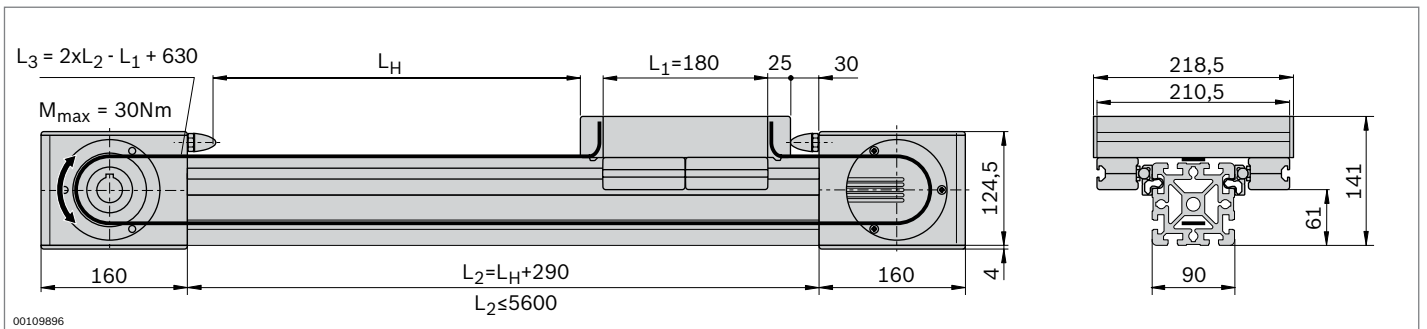


Cam roller guide LF12C – complete axis



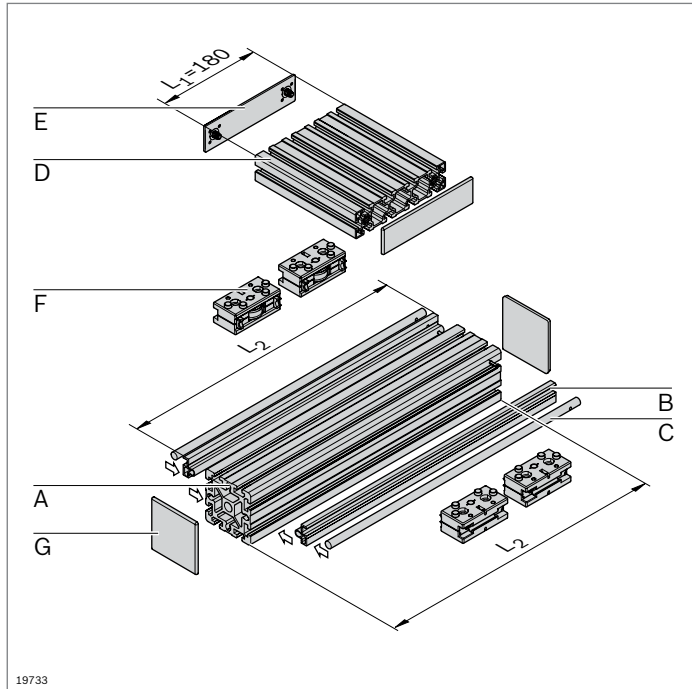
- ▶ Fully assembled cam roller guide
- ▶ Stroke can be individually selected
- ▶ Clamping profile clipped into strut profile 90x90
- ▶ Incl. toothed belt drive; additional notes on the drive concept (p. 13-44)



Technical data

For notes on layout and drive, see page 13-50

Complete axis	L_H (mm)	No.
LF12C	50 ... 5310	3 842 998 498 / L_H

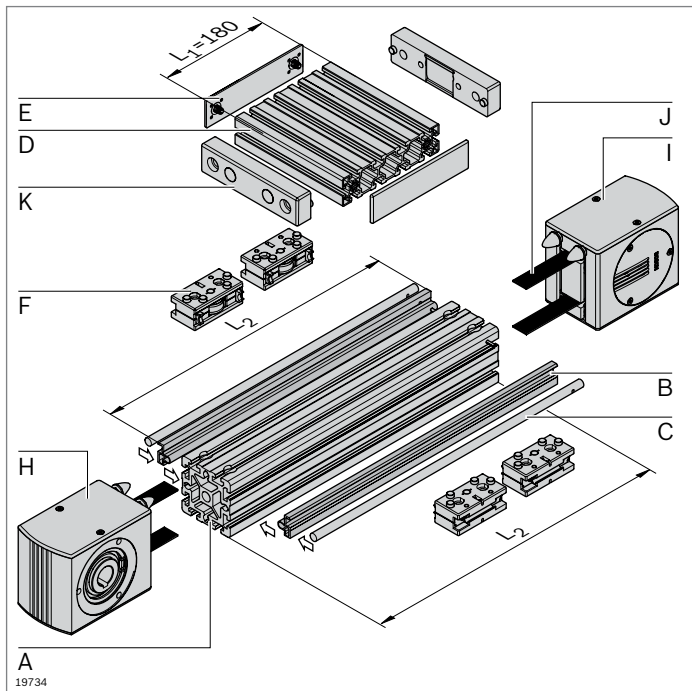


Cam roller guide LF12C – components

- Components for the individual assembly of cam roller guides, with or without drive

Parts list for cam roller guide LF12C without drive

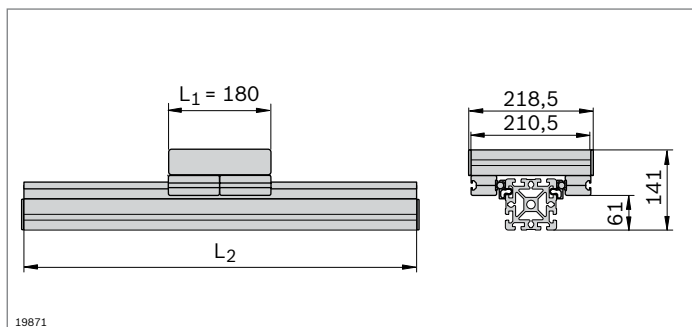
Component	No.	Qty.	Page
A Profile 90x90	3 842 990 500 / L₂	1	2-47
B Clamping profile LF12C	3 842 992 440 / L₂	2	13-25
C Guide rod LF12	3 842 993 968 / L₂	2	13-25
D Profile 45x180	3 842 990 335 / 210.5 mm	1	2-44
E Cover cap 45x180	3 842 548 795	2	2-44
F Guide bearing LF12	3 842 535 664	4	13-26
G Cover cap 90x90	3 842 548 761	2	2-47

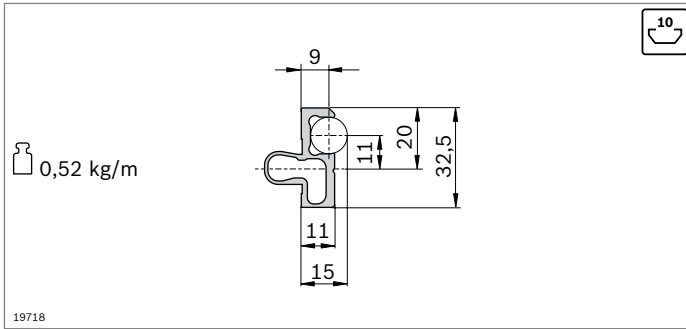


Parts list for cam roller guide LF12C with drive


Component	No.	Qty.	Page
A Profile 90x90 LF12C	3 842 993 082 / L₂	1	2-47
B Clamping profile LF12C	3 842 992 440 / L₂	2	13-25
C Guide rod LF12	3 842 993 968 / L₂	2	13-25
D Profile 45x180	3 842 990 335 / 210.5 mm	1	2-44
E Cover cap 45x180	3 842 548 795	2	2-44
F Guide bearing LF12	3 842 535 664	4	13-26
H Drive head LF12C	3 842 526 863	1	13-28
I Return head LF12C	3 842 526 865	1	13-28
J Toothed belt LF12	3 842 994 821 / L₃¹⁾	1	13-29
K Belt connector LF12	3 842 535 680	2	13-29

¹⁾ L₃ = 2xL₂ - L₁ + 630

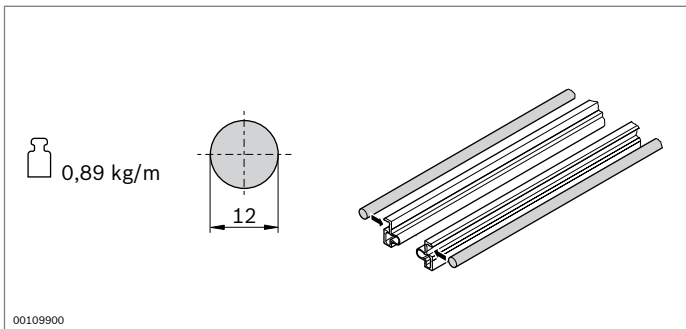





- ▶ The clamping profile is clipped into any chosen strut profile with a 10 mm slot and holds the guide rods

Clamping profile		L ₂ (mm)	No.
LF12C	1 pcs	150 ... 3000	3 842 992 440 / L₂
	 20 pcs	3000	3 842 518 897

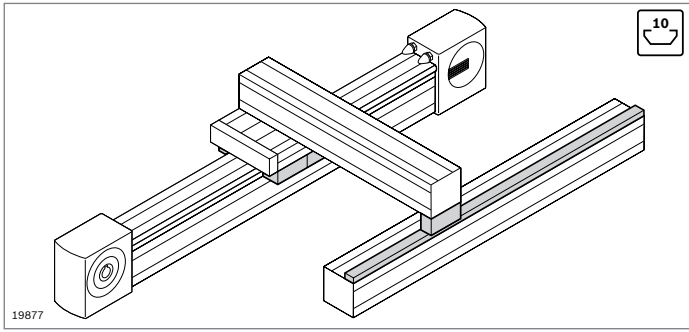
Material: aluminum, anodized



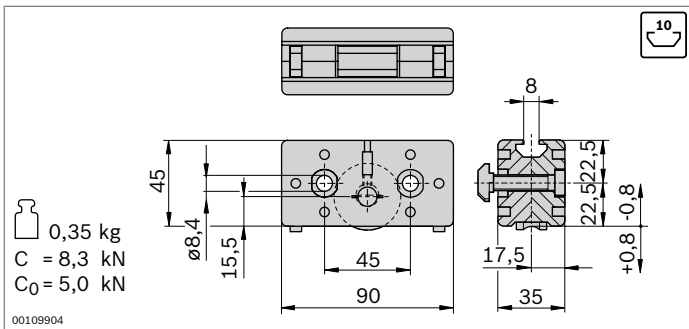
- ▶ The guide rod is pressed into the clamping profile
- ▶ The guide rod guides the guide bearing

Guide rod	L ₂ (mm)		No.
LF12	150 ... 2900	1	3 842 993 968 / L₂
	2900	20	3 842 539 415

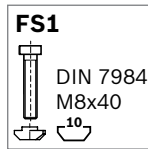
Material: Solid shaft VA, induction hardened and polished
 Condition on delivery: ungreased; greasing according to assembly instructions **3 842 527 226**



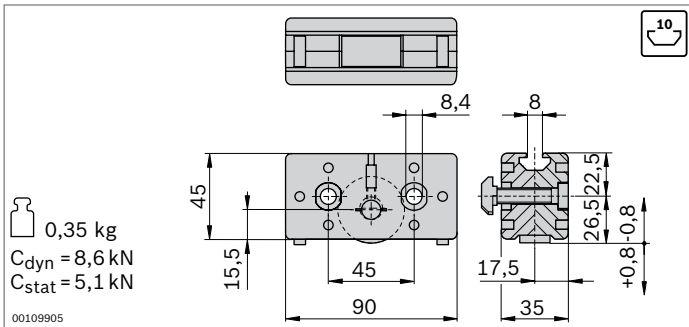
- ▶ Guide bearing for trolley construction
- ▶ Supporting bearing for brackets for bearing off-center forces
- ▶ Guide rail to support supporting bearings (p. 13-27)



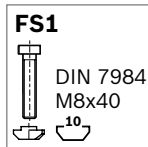
- ▶ Guide bearing for trolley construction
- ▶ Guiding via guide rod
- ▶ Rollers with ball bearings, permanently lubricated
- ▶ Lubricating felts with guide rod lubrication reservoir
- ▶ Play-free roller adjustment via eccentric bolts
- ▶ Replacement of the lubricating felts possible from rear in installed state



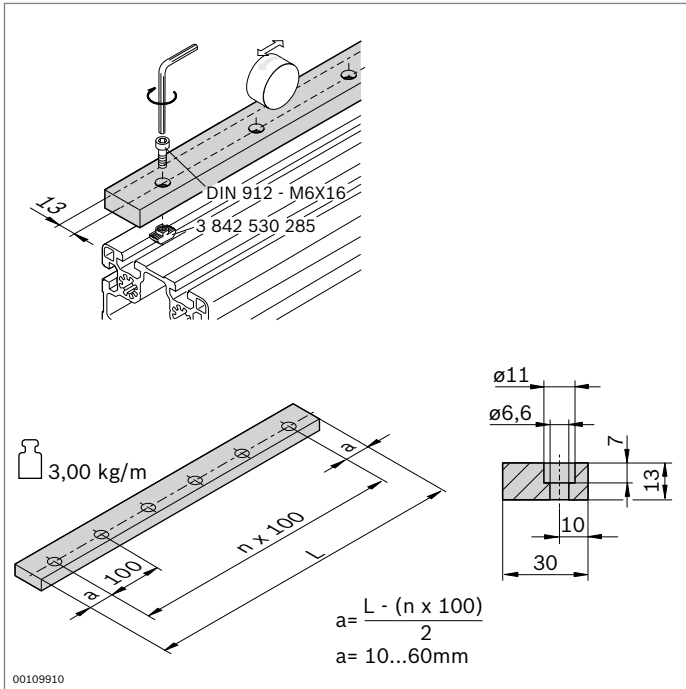
Guide bearing	No.	FS
LF12	2	3 842 535 664 2xFS1
Material:	Guide bearing Die-cast aluminum Roller: steel, hardened, polished	
Scope of delivery:	incl. fastening material (FS)	
Condition on delivery:	lubricating felts ungreased; greasing according to assembly instructions 3 842 527 226	



- ▶ Supporting bearing for brackets for bearing off-center forces
- ▶ For support on the guide rail
- ▶ Rollers with ball bearings, permanently lubricated
- ▶ Lubricating felts with guide rod lubrication reservoir
- ▶ Play-free roller adjustment via eccentric bolts
- ▶ Replacement of the lubricating felts possible from rear in installed state

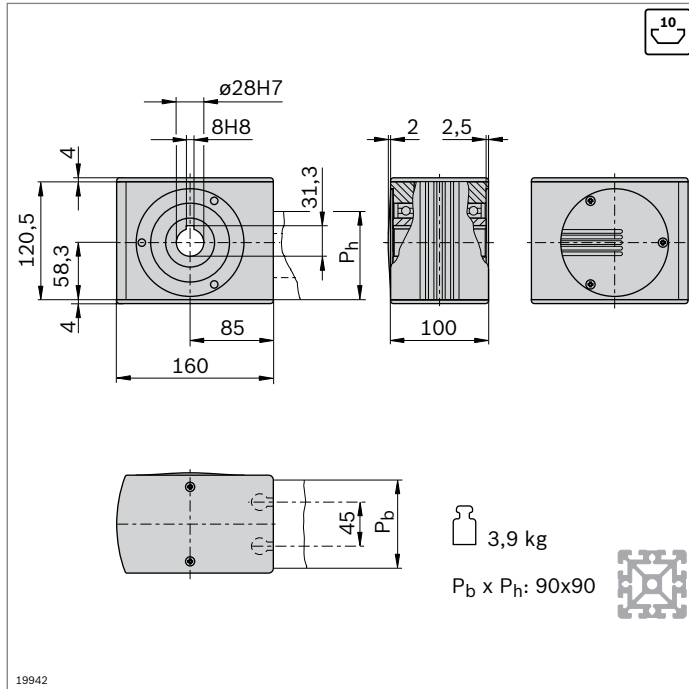


Supporting bearing	No.	FS
LF12	2	3 842 535 666 2xFS1
Material:	Guide bearing Die-cast aluminum Roller: steel, hardened, polished	
Scope of delivery:	incl. fastening material (FS)	
Condition on delivery:	lubricating felts ungreased; greasing according to assembly instructions 3 842 527 226	



► Guide rail to hold supporting bearings

Guide rail	L (mm)	No.
LF12	120 ... 2000	3 842 994 702 / L
Material:	steel, hardened, polished	
Condition on delivery:	ungreased; greasing according to assembly instructions 3 842 527 226	
Accessories:	cylinder bolt DIN 912 – M6x16 T-nut M6, 10 mm slot (3 842 530 285)	



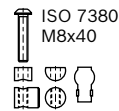
- ▶ Drive head for transferring drive torque to a toothed belt
- ▶ For direct mounting of a motor or (in conjunction with a center shaft) for mounting a hollow shaft gear or a coupling (p. 13-46)
- ▶ Mounted directly on profile by using longitudinal end connector (connector included in scope of delivery)
- ▶ Profile finishing: LF blind hole drilling for longitudinal end connector

Drive head	No.	FS
LF12C	3 842 526 863	4xFS2, 2xFS3

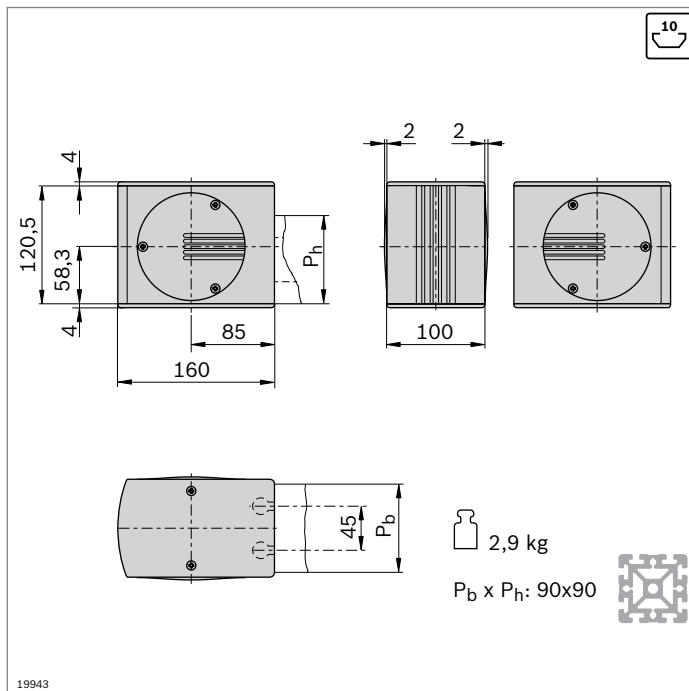
Material: Drive head aluminum, anodized
Hollow shaft: steel; galvanized
Caps: PA; black

Scope of delivery: incl. fastening material (FS), cover caps

FS2



FS3



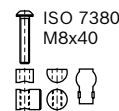
- ▶ Return head for tensioning the toothed belt and changing its direction
- ▶ Mounted directly on profile by using longitudinal end connector (connector included in scope of delivery)
- ▶ Profile finishing: LF blind hole drilling for longitudinal end connector

Return head	No.	FS
LF12C	3 842 526 865	4xFS2, 2xFS3

Material: Return head: aluminum, anodized
Hollow shaft: steel; galvanized
Caps: PA; black

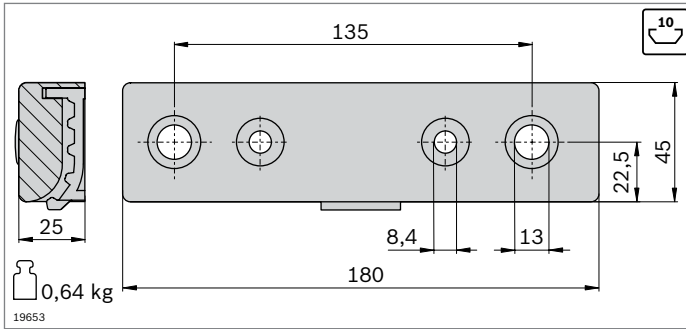
Scope of delivery: incl. fastening material (FS), cover caps

FS2



FS3





- ▶ Belt connector suitable for trolley built out of strut profiles 45x180
- ▶ All connecting parts included for mounting at the profile end (LF12S) or the slot (LF12C)
- ▶ Profile finishing for strut profile 45x180 for trolley LF12S: M12

Belt connector	No.	FS
LF12	2 3 842 535 680	2xFS4, 2xFS5, 2xFS6, 2xFS7, 4xFS8

Material: aluminum, painted black
 Scope of delivery: incl. fastening material (FS)

FS4

DIN7984
M12x40

FS5

DIN 7984
M8x30
DIN 125
A8,4

FS6

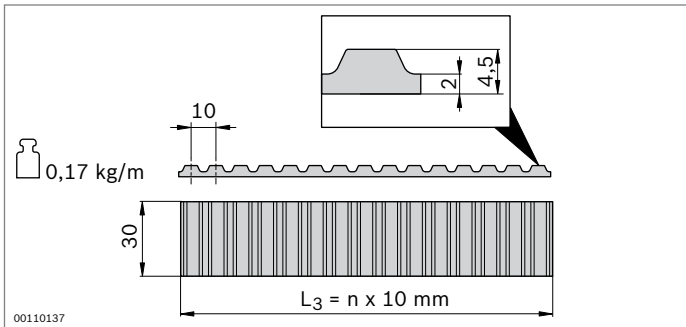
DIN 7991
M8x30

FS7

ø18x7

FS8

ø10xø5x11



- ▶ Toothed belt as a trolley drive
- ▶ Pitch: AT10

Toothed belt	L_3 (mm)	No.
LF12	300 ... 50000	3 842 994 821 / $L_3$¹⁾
	50000	3 842 526 422

¹⁾ $L_3 = 2xL_2 - L_1 + 630$

Material: PU with embedded steel wires