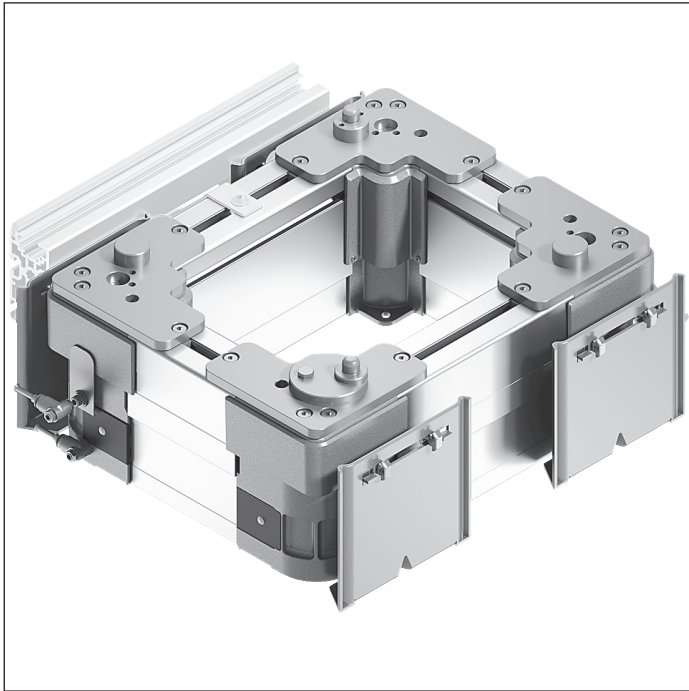
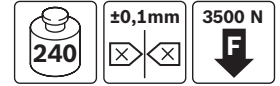


## PE 2/H positioning unit



- ▶ For positioning a workpiece pallet in a manual/ automatic processing station
- ▶ Positioning accuracy up to  $\pm 0.1$  mm when assembled on a separate machine frame
- ▶ WT lift above transportation level, approx. 16 mm
- ▶ Positioning via the PE 2 positioning pins and the positioning bushings on the WT 2 workpiece pallet
- ▶ Mounting holes on lift frame as an optional fastening point for a separate machine frame
- ▶ Permissible vertical process forces: 3500 N, incl. WT 2
- ▶ Can be combined with all WT 2/H and WT 2/F-H workpiece pallets

### Accessories

#### Required accessories

- ▶ VE 2/D100-H stop gate, see p. 8-33 or  
VE 2/D250-H stop gate, see p. 8-37

### Delivery notes

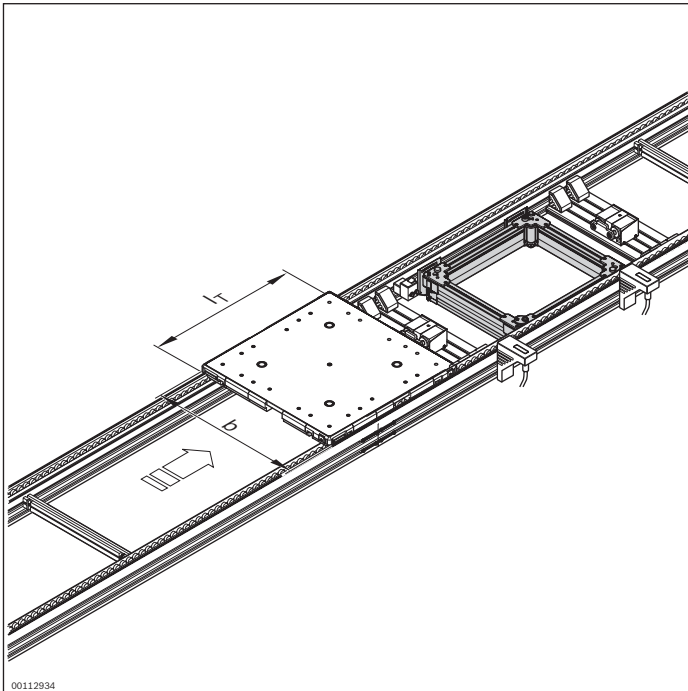
#### Scope of delivery

- ▶ Incl. fastening material
- ▶ Pneumatic elements

#### Condition on delivery

- ▶ Fully assembled

## Ordering information



<b>Material number</b>		<b>3842999000</b>
b (mm)	Track width in direction of transport	480; 640; 800; 1040; 1200 480 ... 1200 <sup>1</sup>
l <sub>T</sub> (mm)	Length in direction of transport	480; 640; 800; 1040; 1200 480 ... 1200 <sup>1</sup>
w x l <sub>d</sub> (mm x mm)	Combination options	480 ... 1200 x 480 ... 1200

<sup>1</sup> Individual width variants available

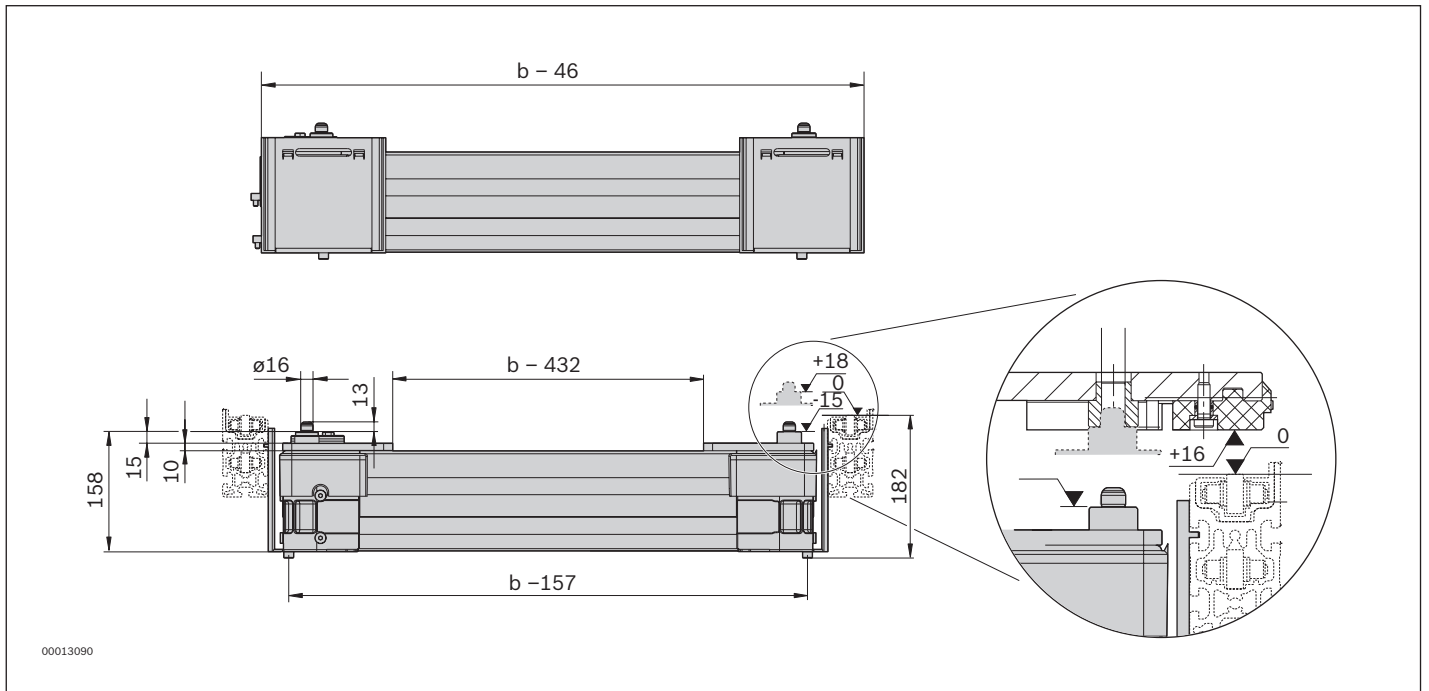
## Technical data

<b>Material number</b>		<b>3842999000</b>	
<b>Load</b>			
Max. total workpiece pallet weight	m <sub>G</sub>	kg	240
<b>Features</b>			
ESD			Yes
<b>Additional information</b>			
Required compressed air connection	p	bar	4 ... 6
Pneumatic connector	d	mm	8
WT lift above conveying level		mm	16
Repeat accuracy <sup>1</sup>		mm	±0.1
Permissible vertical process forces <sup>2</sup>		N	3500

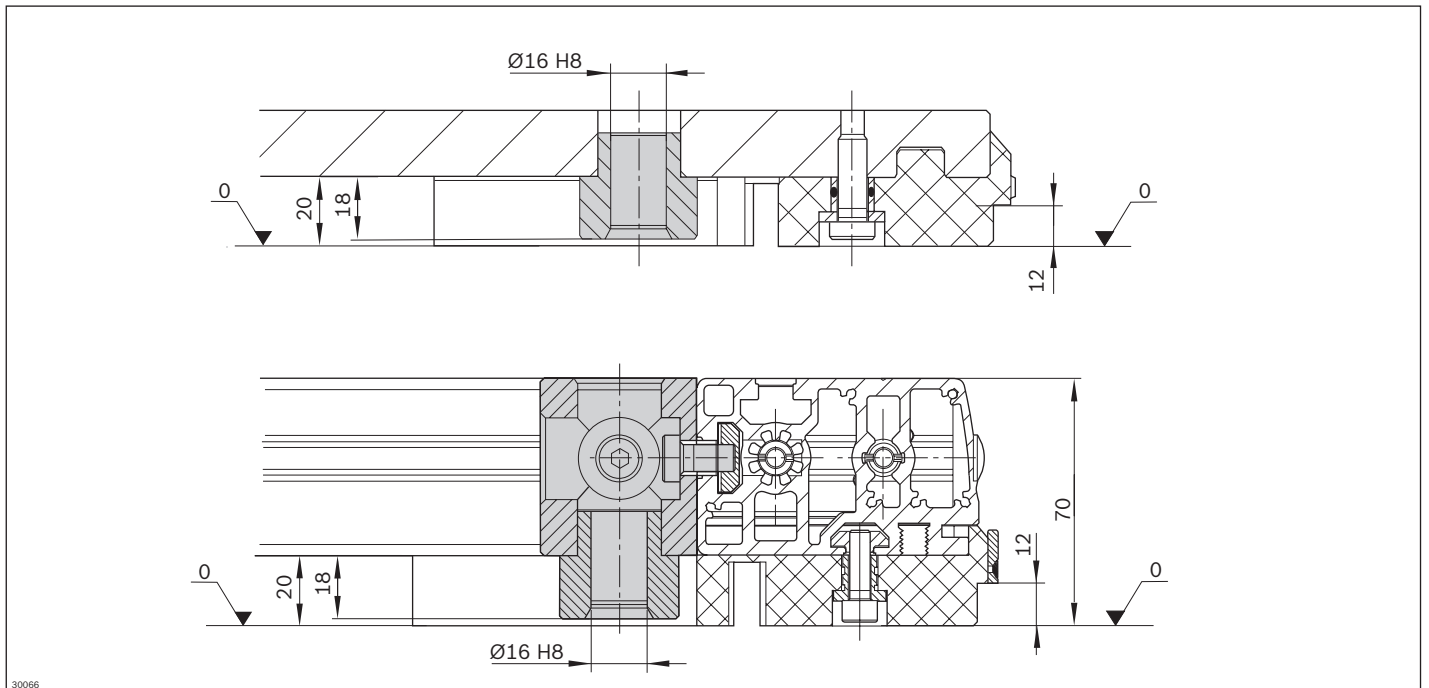
<sup>1</sup> When assembled on a separate machine frame

<sup>2</sup> Incl. WT 2

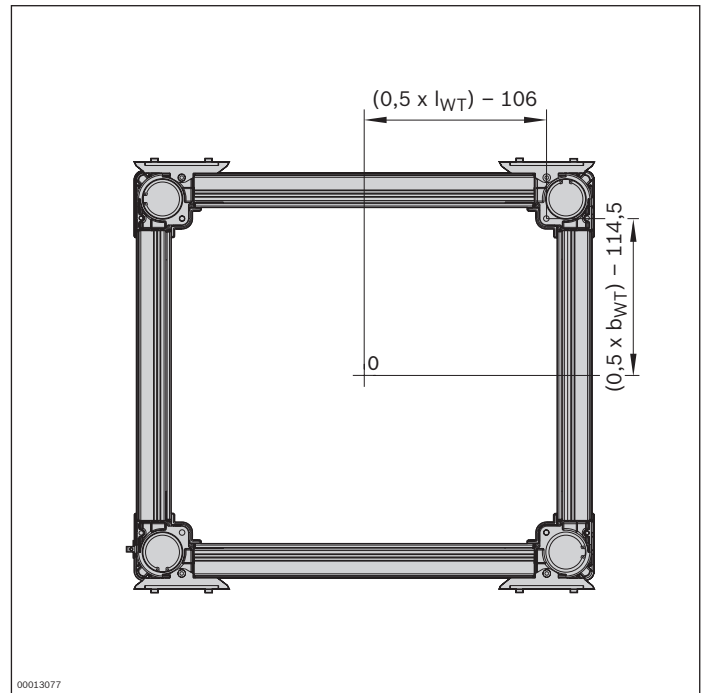
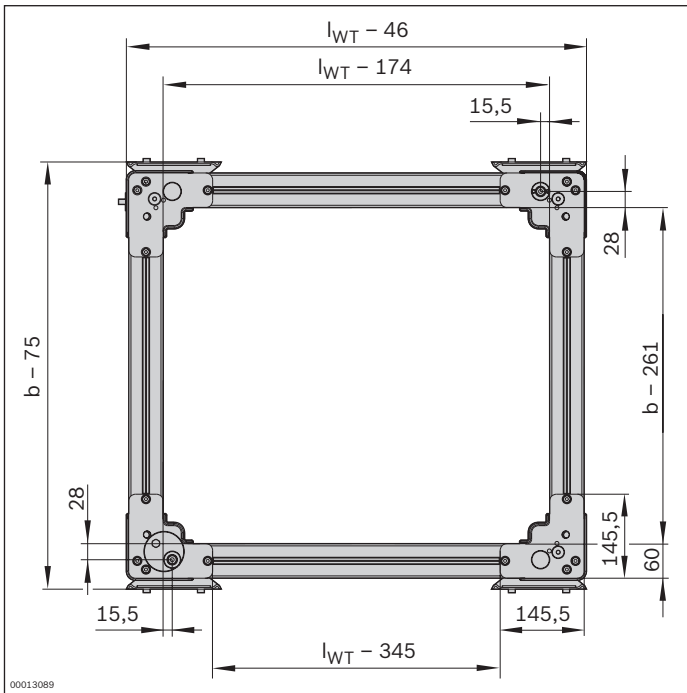
**Dimensions**



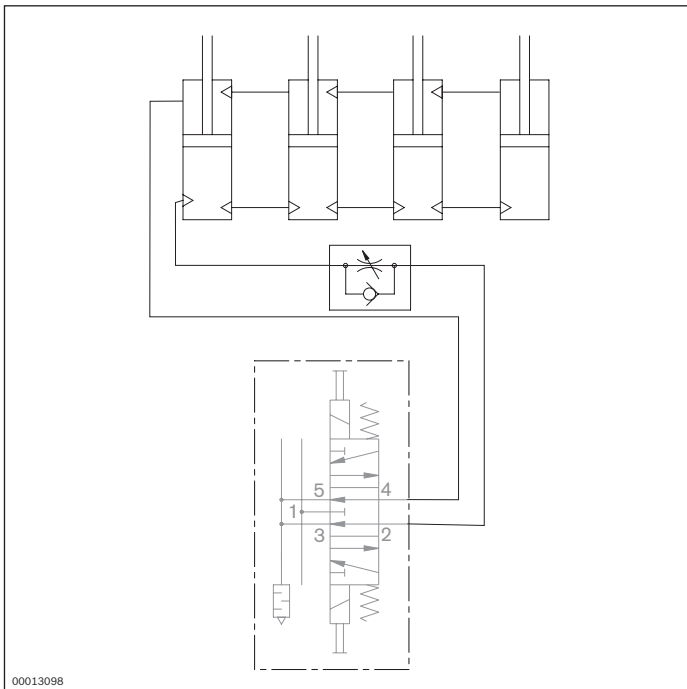
0 Transport level



**Dimensions**



**Circuit diagrams**



1 Not included in delivery