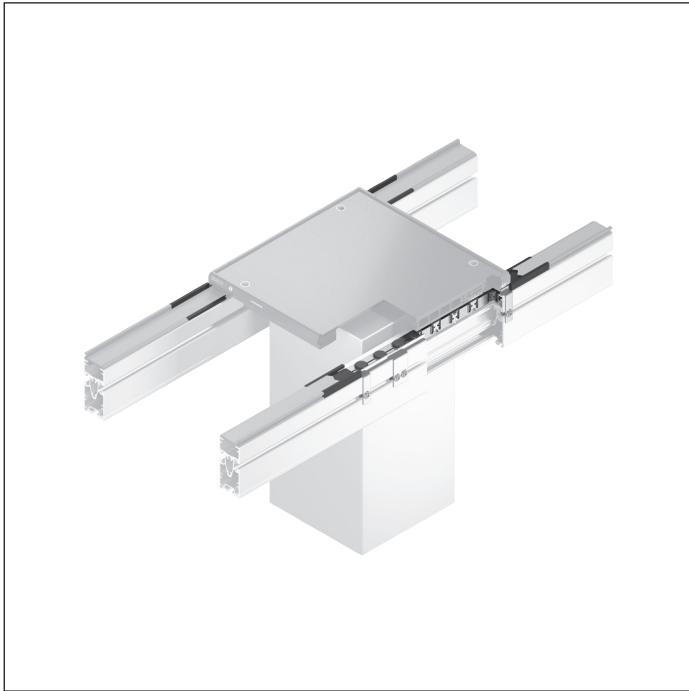
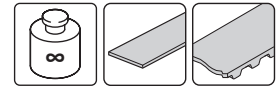


## PE 2/XX process force decoupler Components



- ▶ For mounting processes with especially high demands on vertical process forces
- ▶ To guide the belt or toothed belt near a force cell to be constructed by the customer.
- ▶ Permissible vertical process force depending on the construction by the customer
- ▶ Lift below conveying level approx. 1 mm.
- ▶ Prepositioning via VE (accessories)
- ▶ Can be combined with WT 2, WT 2/F, WT 2/H and WT 2/F-H, on which the customer must install spacer plates under the force introduction side

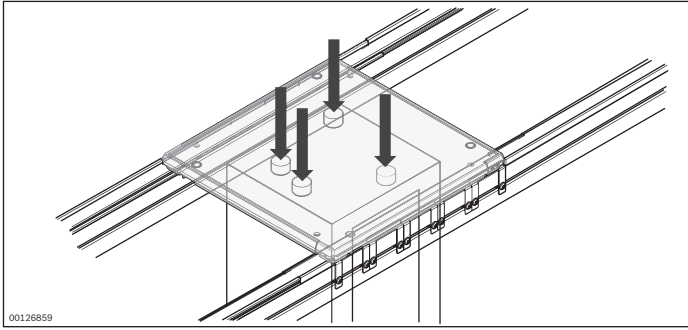
The process force decoupler is assembled using the following parts:

- ▶ Spring element in versions with 5.8 N/cm and 10 N/cm surface load, see p. 7-46
- ▶ Transition pieces to and from the spring elements, see p. 7-48
- ▶ Lateral guides, see p. 7-50

### Accessories

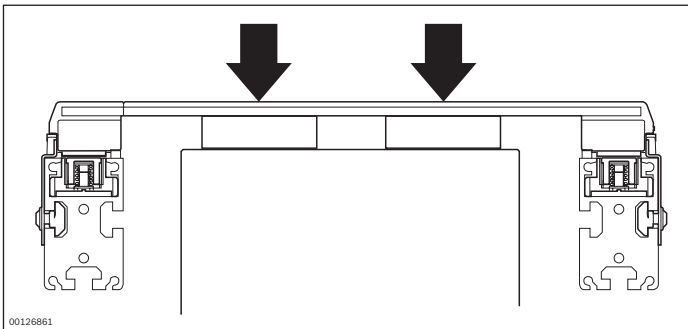
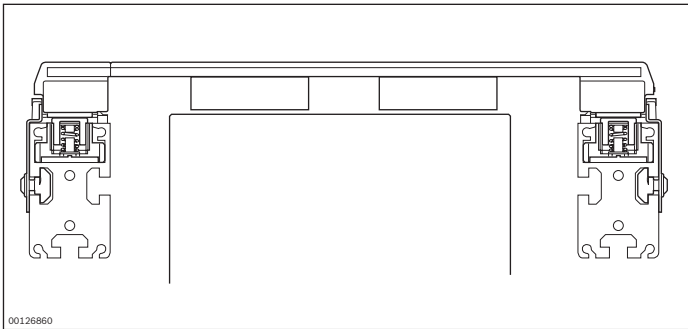
#### Required accessories

- ▶ Anvil (customer force cell) to absorb process forces at the mounting location of the positioning unit
- ▶ Substructure plate for workpiece pallets to transfer the process forces to the anvil (provided by customer)
- ▶ VE 2 stop gate, see p. 8-4

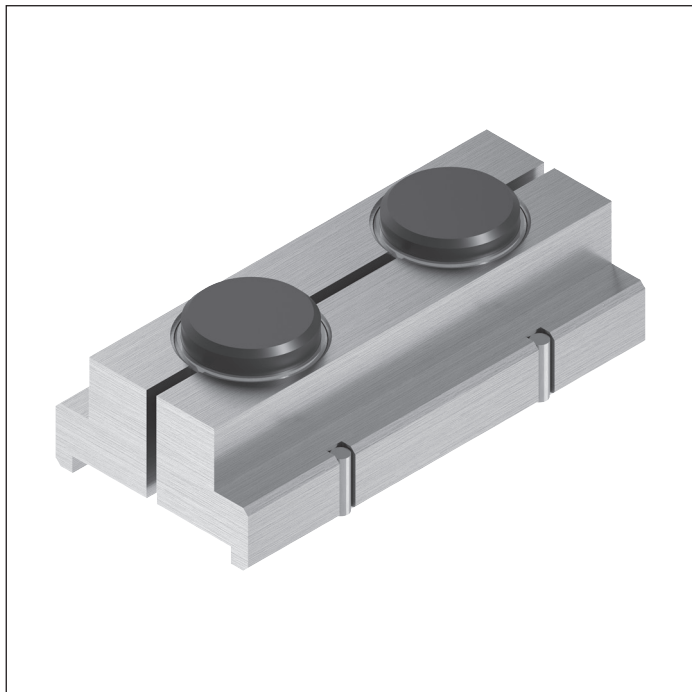
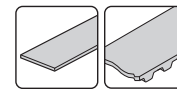


### Mode of operation

Vertical process forces are deflected via a force cell constructed by the customer. In doing so, the plate of the workpiece pallet is supported via the spacer blocks on the anvil of the force cell. The guide profile is replaced by spring elements near the force cell to prevent the conveyor medium (belt or toothed belt) from getting jammed between the workpiece pallet and guide profile. The conveyor medium can thus be pushed down by up to 1.5 mm.



## Spring element



- ▶ For mounting in sections where the workpiece pallet is stressed by the process forces
- ▶ For section loads of 5.8 N/cm and 10 N/cm

### Delivery notes

#### Scope of delivery

- ▶ Set containing 2x spring element

### Ordering information

Product designation	Packaging unit	Material number
10 N/cm spring element	Set	3842536930
5.8 N/cm spring element	Set	3842536931

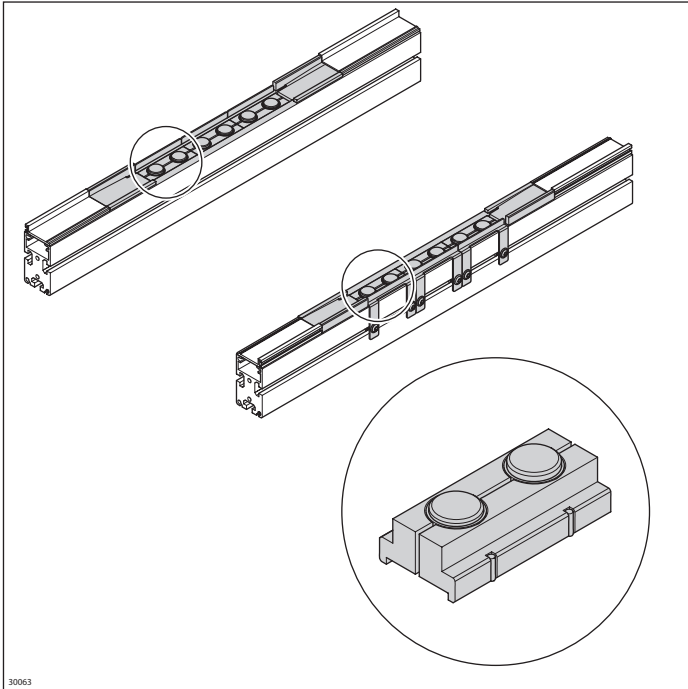
### Technical data

Material number	3842536930	3842536931
<b>Features</b>		
ESD	Yes	Yes

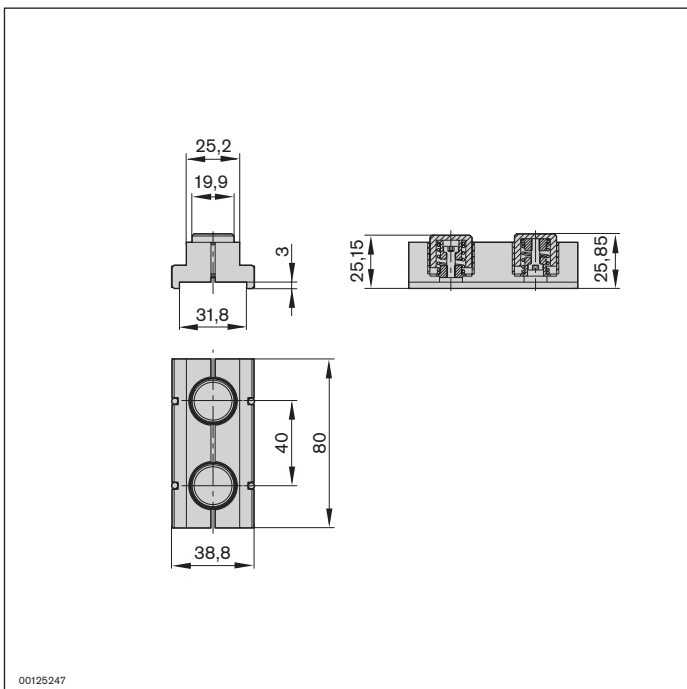
Length of workpiece pallet $l_{WT}$ (mm)	Quantity required per section profile X	5.8 N/cm section load 3842536931 $m_{WT} \max^1$ (kg)	10 N/cm section load 3842536930 $m_{WT} \max^1$ (kg)
160	2	9.3	16
240	3	14.0	23.1
320	4	18.7	31.9
400	5	23.3	40
480	6	28.0	48

Length of workpiece pallet $l_{WT}$ (mm)	Quantity required per section profile X	5.8 N/cm section load 3842536931 $m_{WT} \max^1$ (kg)	10 N/cm section load 3842536930 $m_{WT} \max^1$ (kg)
640	8	37.3	64
800	10	46.7	70
1040	13	60.7	70

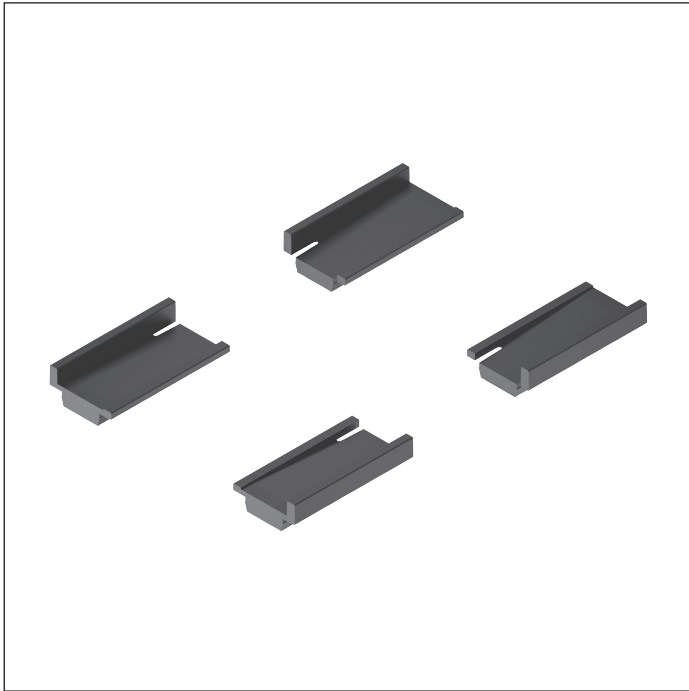
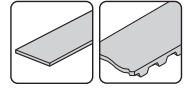
<sup>1</sup> Maximum workpiece pallet weight, incl. spacer block/base plate



### Dimensions



## Transition piece



- ▶ For transitioning from guide profile to spring elements and vice versa
- ▶ For use with the belt or toothed belt conveyor medium

### Delivery notes

#### Scope of delivery

- ▶ Set containing 2x left transition piece, 2x right transition piece

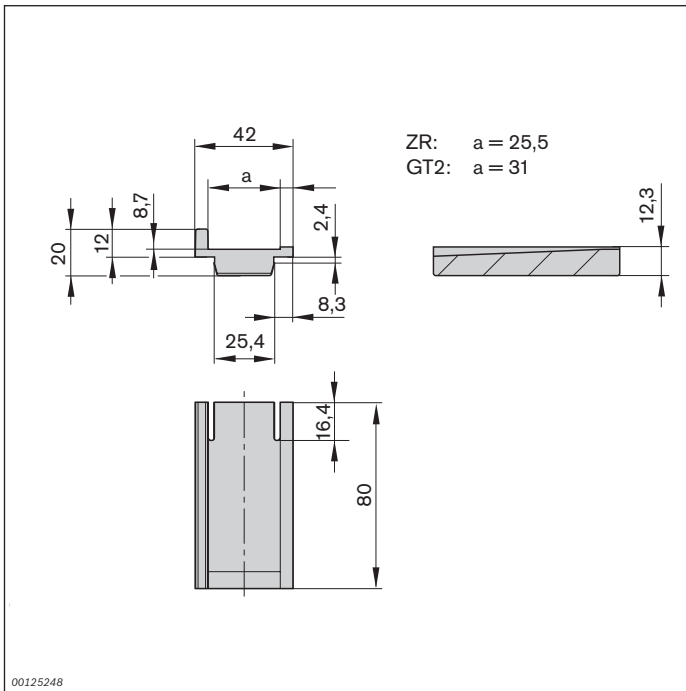
### Ordering information

Product designation	Packaging unit	Material number
Transition piece for belt	Set	3842536932
Transition piece for toothed belt	Set	3842536933

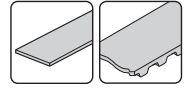
### Technical data

<b>Material number</b>	<b>3842536932</b>	<b>3842536933</b>		
<b>Features</b>				
ESD	Yes	Yes		
<b>Dimensions</b>				
Length	l	mm	80	80

**Dimensions**



## Lateral guide



- ▶ For laterally guiding workpiece pallets in the sections where the spring elements are mounted
- ▶ A WT 2 stop can be positioned diagonally the stop gate to prevent workpiece pallets from rotating and tilting

### Delivery notes

#### Scope of delivery

- ▶ 1 set (containing 2x lateral guide), incl. fastening material

### Ordering information

Product designation	Packaging unit	Material number
Lateral guide	Set	3842536926

### Technical data

Material number	3842536926	
Features		
ESD	Yes	
Material specification	Sheet steel; galvanized	
Dimensions		
Length	l	mm
		80

## Dimensions

