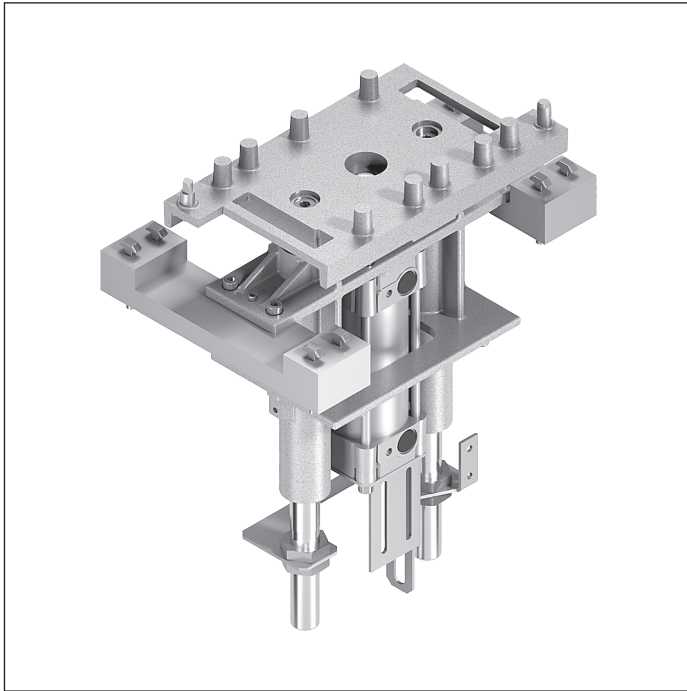
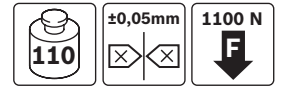


HP 2 lift positioning unit



- ▶ Positions a workpiece pallet in a processing station with high positioning accuracy requirements and higher workpiece pallet weights.
- ▶ Positioning via the HP 2 positioning pins and the positioning bushings on the WT 2 workpiece pallet
- ▶ Lifting cylinder with adjustable top-end and bottom stop-end damping
- ▶ Top-end damping takes effect only under full lift.
- ▶ Continuously adjustable lift height in 8 lift ranges h_N of 0 ... 404 mm
- ▶ Can be combined with workpiece pallets WT 2, WT 2/F, WT 2/E

7

Damping at the top end of the cylinder takes effect only under full lift. With larger lifts, we recommend separately

fixing the workpiece pallet while the HP 2 is in the highest position in order to improve positioning accuracy.

Accessories

Required accessories

- ▶ VE 2 stop gate, see p. 8-4
- ▶ Throttle non-return valve, exhaust air, G3/8", diameter $d = 6$ mm

Delivery notes

Scope of delivery

- ▶ Incl. fastening material
- ▶ Switch bracket for mounting of M12 sensors for top and bottom lift position sensing

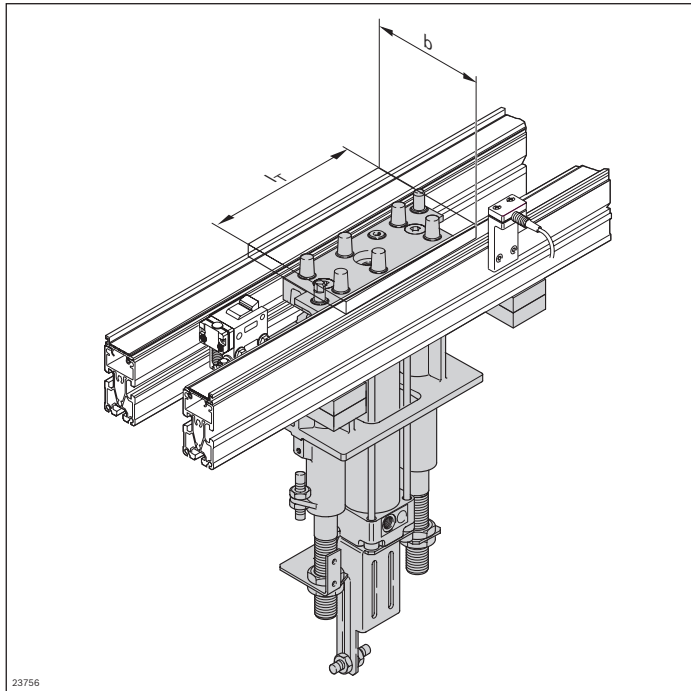
Recommended accessories

- ▶ Damping kit (3842211355) to set the WT on the conveyor medium without any shocks
- ▶ HP 2 housing element, see p. 7-34

Condition on delivery

- ▶ Fully assembled

Ordering information



Material number		3842999678
b (mm)	Track width in direction of transport	160; 240; 320; 400; 480
l _T (mm)	Length in direction of transport	0 ¹ ; 160; 240; 320; 400; 480; 640; 800
w x l _d (mm x mm)	Combination options	160 x 0 ¹ ; 160; 240; 320; 400; 480 240 x 0 ¹ ; 160; 240; 320; 400; 480 320 x 0 ¹ ; 160; 240; 320; 400; 480 400 x 0 ¹ ; 320; 400; 480; 640; 800 480 x 0 ¹ ; 320; 400; 480; 640; 800
h _N (mm)	Nominal stroke	55; 100; 150; 200; 250; 300; 350; 400
AO	Installation location Under the conveyor section (AO = UB) On the machine table (AO = AT) For custom design without fastening material (AO = O)	UB; AT; O

¹ If the value is "0", HP 2 will be delivered with a lift plate (3842516048, see p. 7-31) instead of the lift position plate for custom designing of the lift positioning plate.

Technical data

Material number		3842999678	
Load			
Max. total workpiece pallet weight	m _G	kg	110
Features			
ESD			Yes
Additional information			
Required compressed air connection	p	bar	4 ... 6
Pneumatic connector ²	d	mm	6
Repeat accuracy		mm	±0.05
Permissible vertical process forces ¹		N	1100

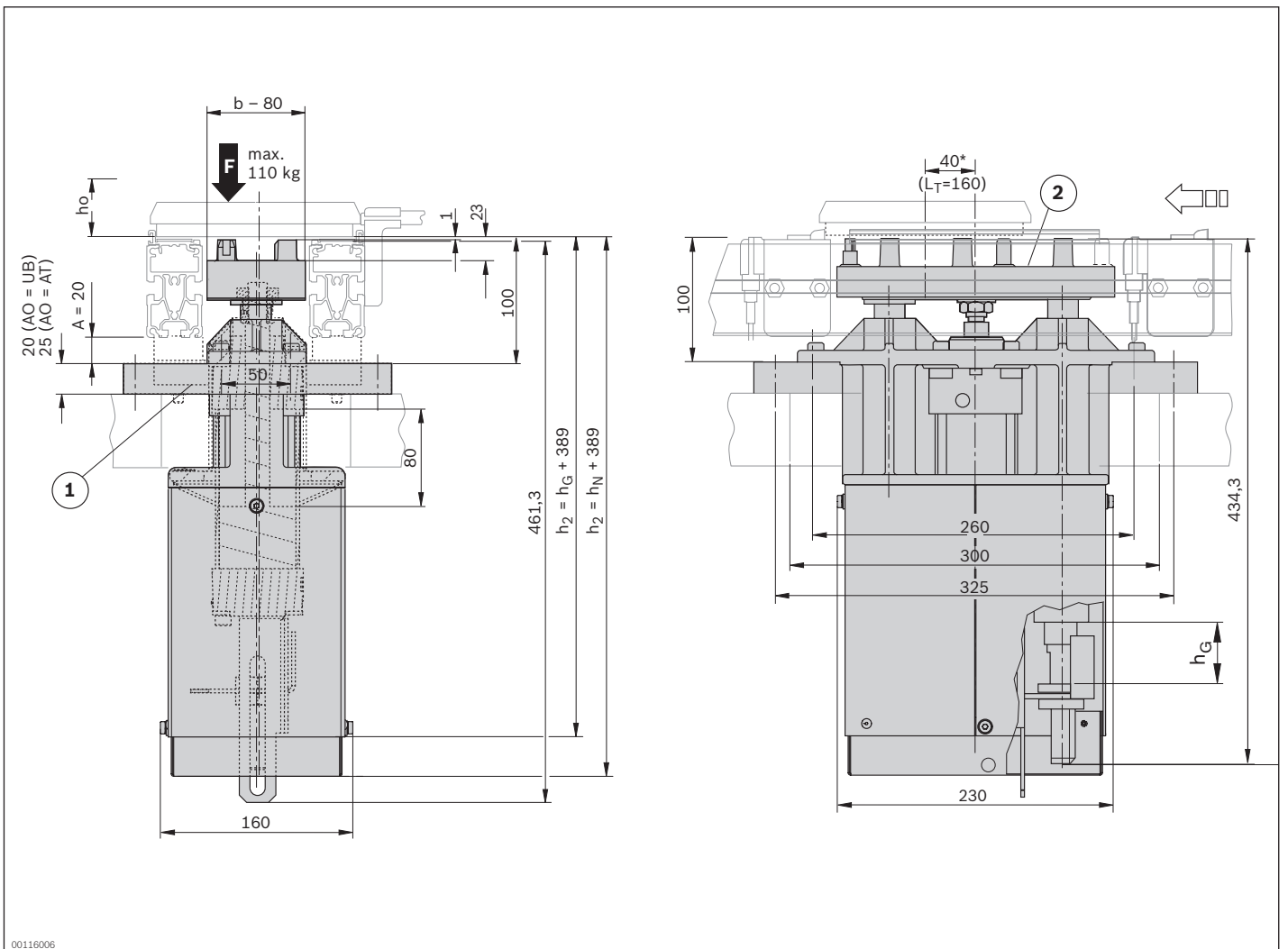
¹ Incl. WT 2

² Throttle non-return valve, exhaust air with connector, diameter d = 6 mm, for thread G 3/8" must be attached by the customer

Lift range

Cylinder total lift h_G (mm)	Nominal stroke h_N (mm)	WT lift above conveying level h_0 (mm)
80	55	0 ... 59
125	100	60 ... 104
175	150	105 ... 154
225	200	155 ... 204
275	250	205 ... 254
325	300	255 ... 304
375	350	305 ... 354
425	400	355 ... 404

Dimensions



00116006

* Eccentric position for WT L_T = 160 mm

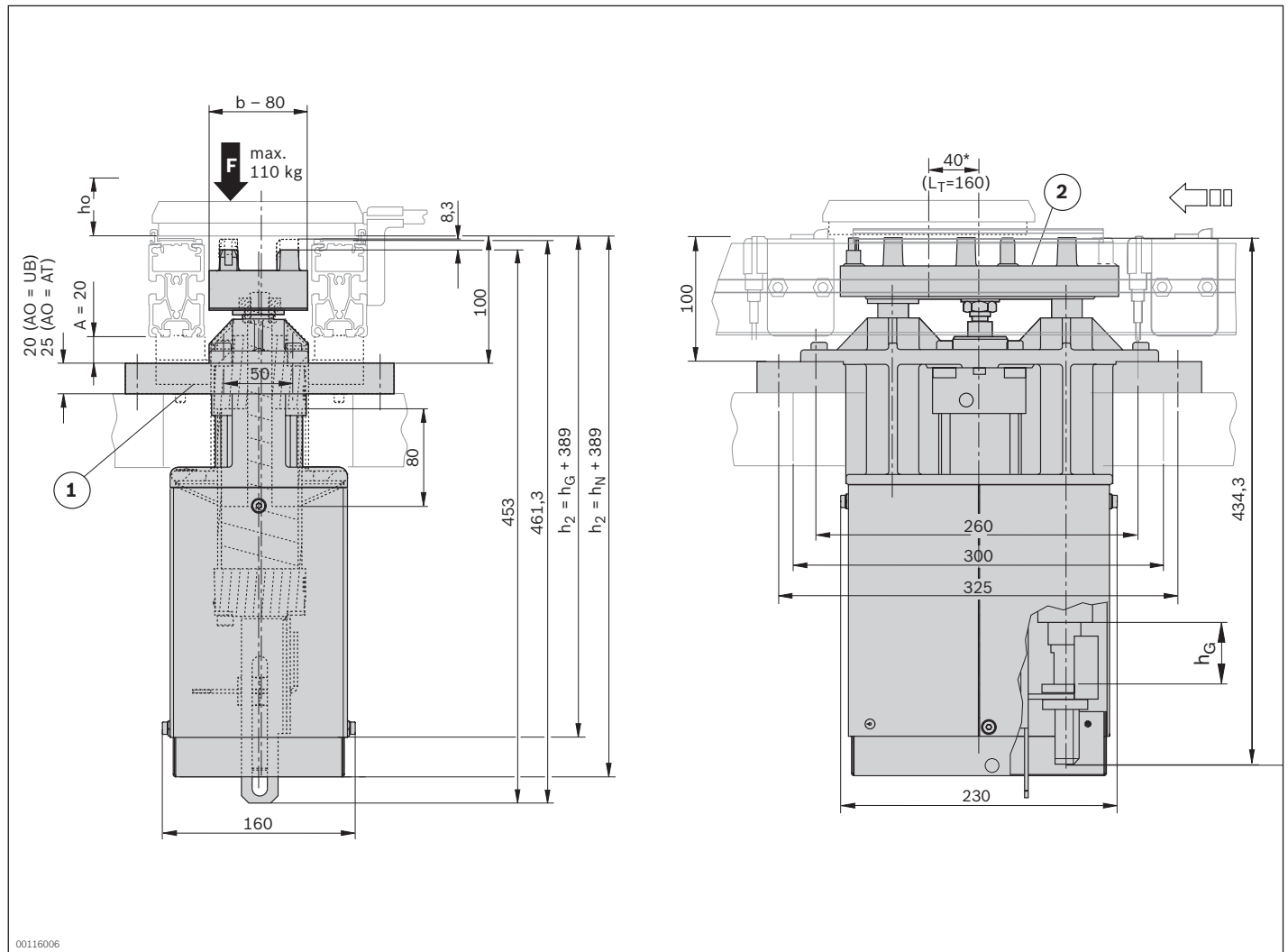
1 Fastening kit (UB or AT)

2 Positioning plate

h_0 WT lift above transportation level

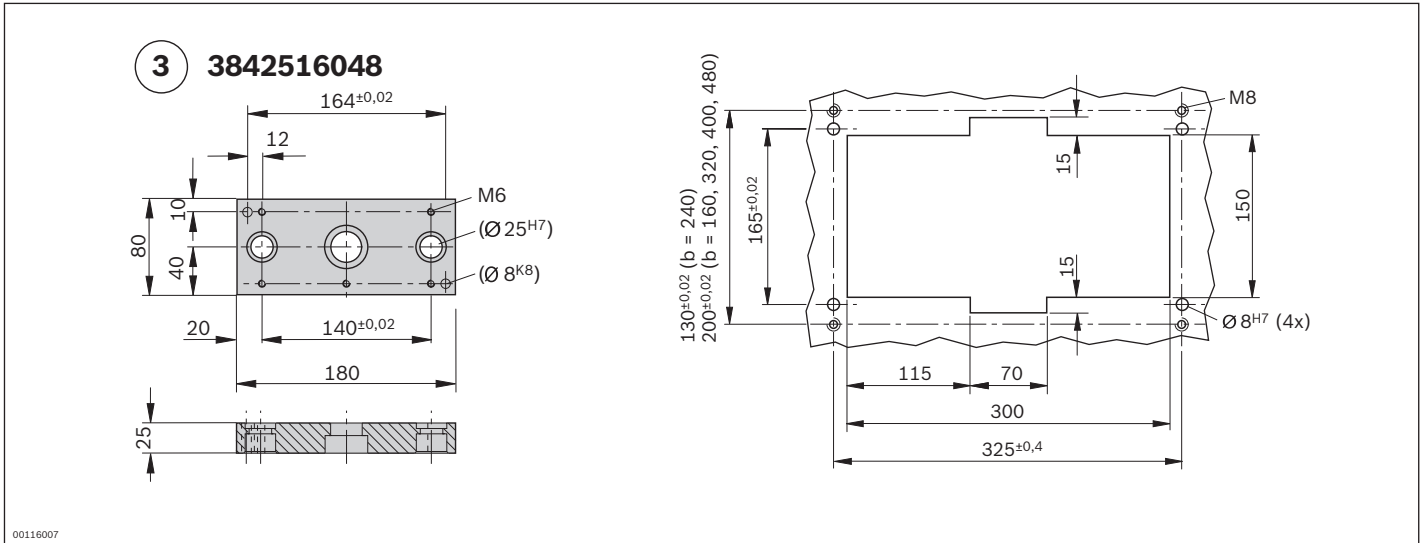
h_G total cylinder lift

7-30 **TS 2plus 7.0** | Positioning and orientation
 HP 2 lift positioning unit



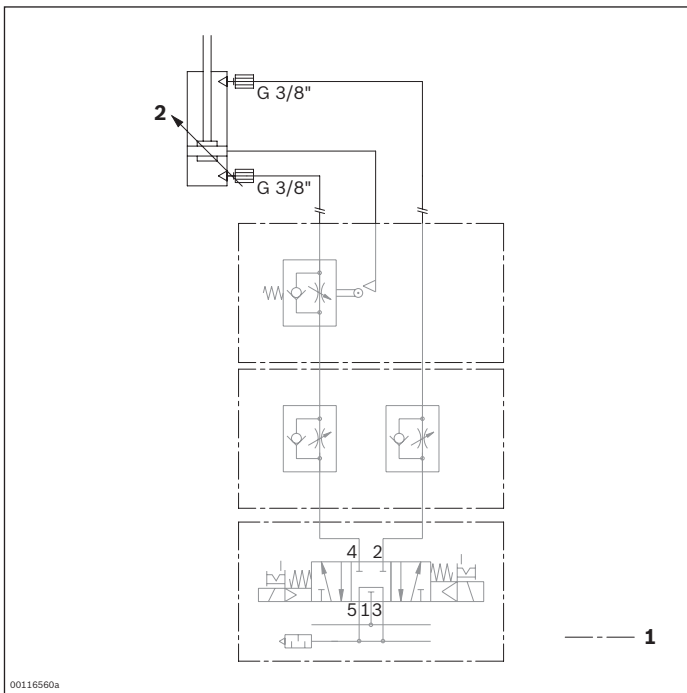
00116006

- * Eccentric position for WT $L_T = 160$ mm
- 1 Fastening kit (UB or AT)
- 2 Positioning plate
- h_0 WT lift above transportation level
- h_G total cylinder lift



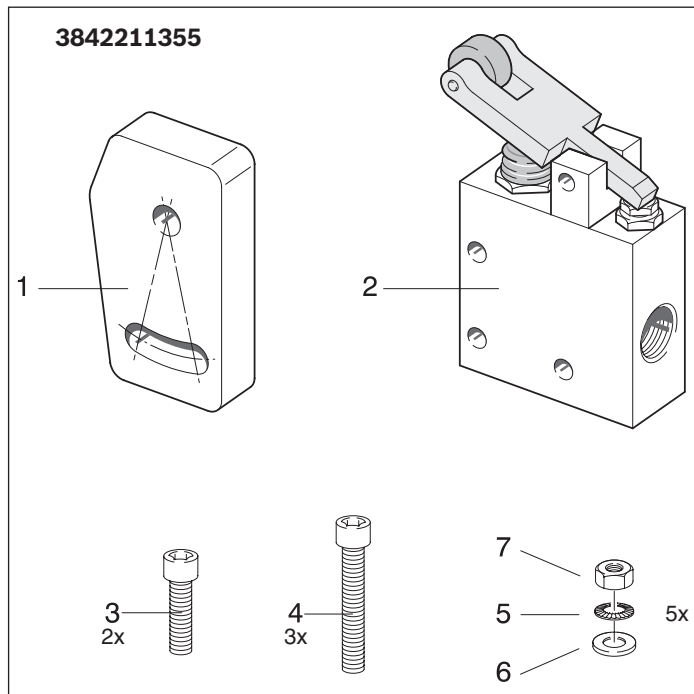
3 Lift plate

Circuit diagrams



- 1 Not included in delivery
- 2 Adjustable top-end damping

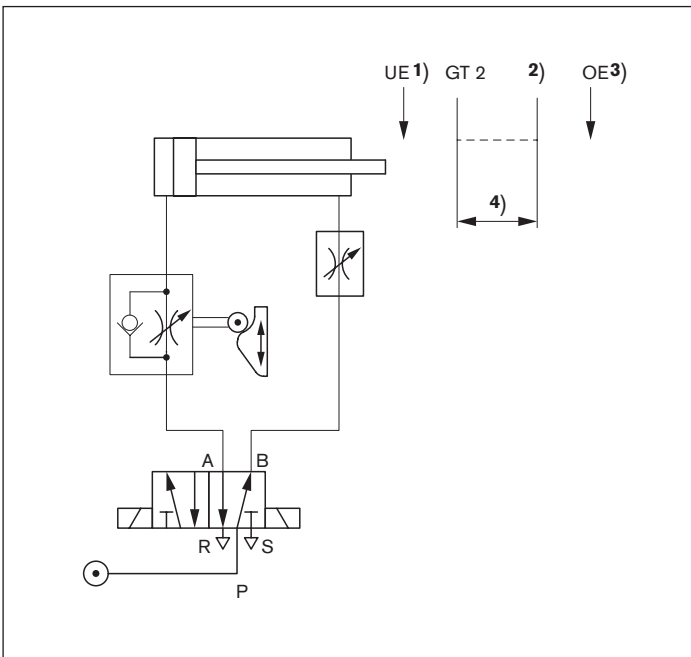
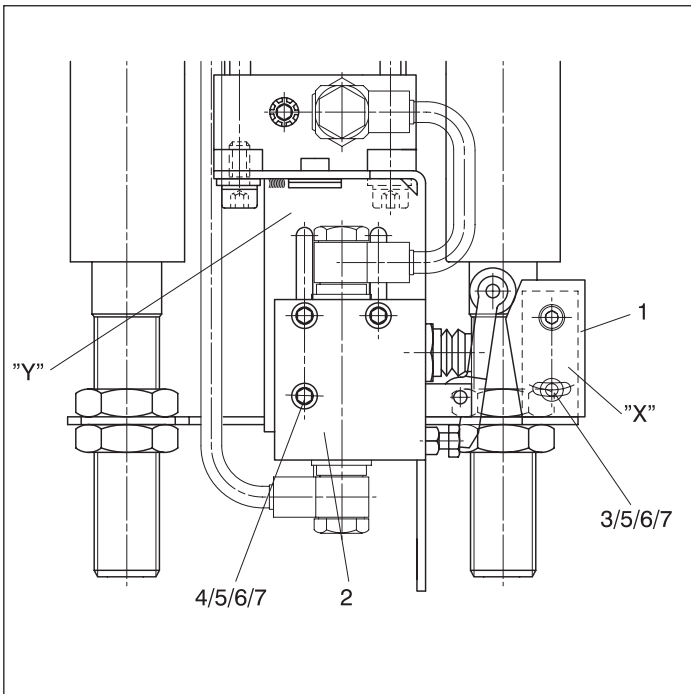
Kit for lower end damping



- ▶ Fasten each switching tappet (1) to the metal bracket "X" with two cylinder head screws M6x20 (3), lock washers (6) and hexagon nuts (7)
- ▶ Fasten each valve (2) to the limit switch holder "Y" with three cylinder head screws M6x35 (4) lock washers (5) washers (6) and hexagon nuts (7)

Ordering information

Product designation	Material number
Kit for bottom-end damping	3842211355



- 1 Lower end position
- 2 Tappet
- 3 Upper end position
- 4 Damping (adjustable)

HP 2 housing element

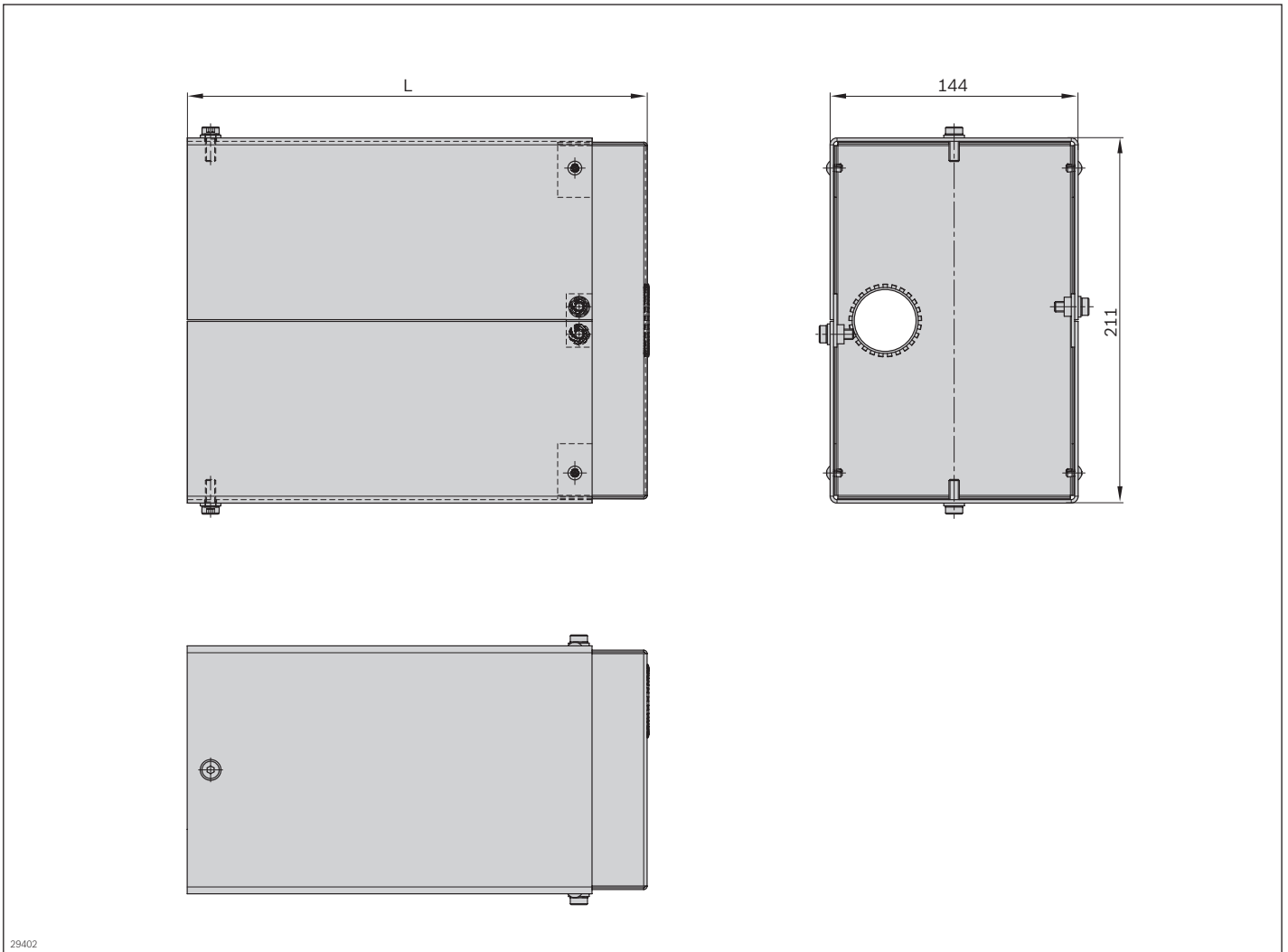


► Housing element for HP 2 lift positioning unit

Ordering information

Product designation	Nominal stroke h_N (mm)	Length L (mm)	Material number
HP 2 housing element	55	267	3842510157
HP 2 housing element	100	312	3842510158
HP 2 housing element	150	362	3842510159
HP 2 housing element	200	412	3842510160
HP 2 housing element	250	462	3842532409
HP 2 housing element	300	512	3842532410
HP 2 housing element	350	562	3842532411
HP 2 housing element	400	612	3842532412

Dimensions



29402

Length L (mm)	Material number
267	3842510157
312	3842510158
362	3842510159
412	3842510160
462	3842532409
512	3842532410
562	3842532411
612	3842532412