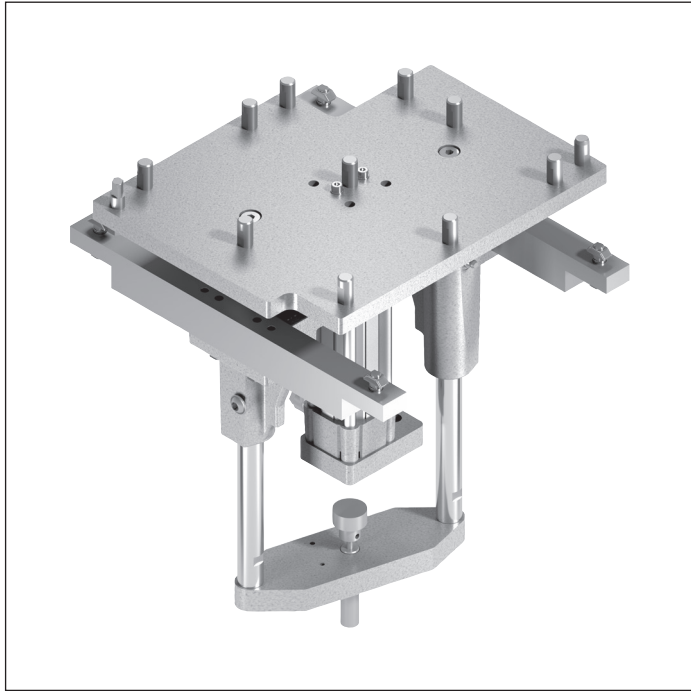
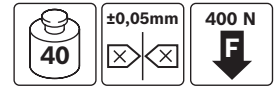


## HP 2/L lift positioning unit



- ▶ Positions a workpiece pallet in a processing station with high positioning accuracy requirements
- ▶ Positioning with exchangeable positioning pins in the HP 2/L and positioning bushings in the WT 2 workpiece pallet
- ▶ Lifting cylinder  $\varnothing$  40 mm with damping for the lower and upper end position
- ▶ Exchange of lifting cylinder possible without disassembling the lift plate
- ▶ 5 lift ranges  $h_0$  from 0 ... 240 mm, continuously adjustable central lift height within the lift range
- ▶ Optional lifting cylinder for  $b = 240$  mm, center ( $HA = 0$ ) or offset ( $HA = 1$ ).  
Space-saving arrangement made possible by inner WT stop
- ▶ Adjustment time at  $H = 50$  mm without load:  
Upward stroke = 0.5 s, downward stroke = 0.5 s  
(= lift range from 0 to 28 mm)
- ▶ Can be combined with workpiece pallets WT 2, WT 2/F, WT 2/E

### Accessories

#### Required accessories

- ▶ Position sensor set for SA lifting cylinder, see p. 7-22
- ▶ Position sensor set with RA turret stop, see p. 7-26
- ▶ HP 2/L housing element, see p. 7-18

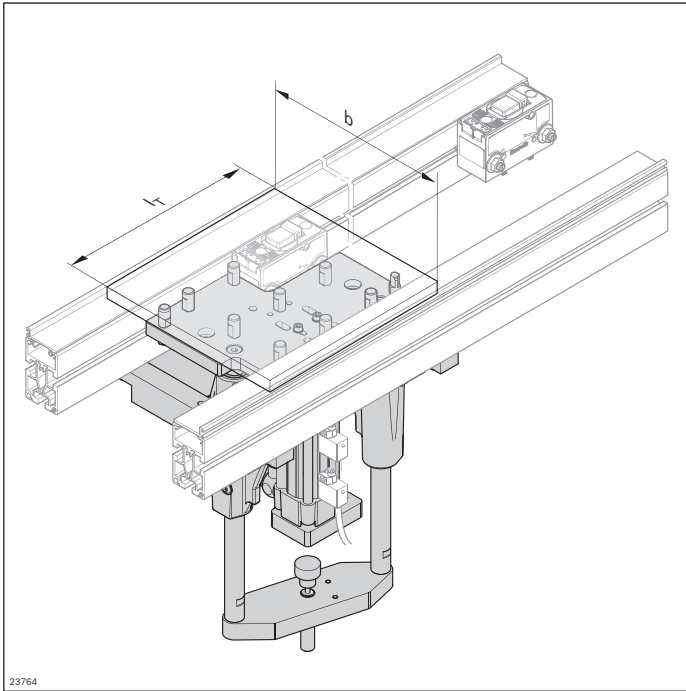
### Delivery notes

#### Scope of delivery

- ▶ Incl. fastening material
- ▶ Incl. throttle non-return valve

#### Condition on delivery

- ▶ Fully assembled

**Ordering information**


23764

<b>Material number</b>	<b>3842998952</b>	
b (mm)	Track width in direction of transport	160; 240; 320
l <sub>T</sub> (mm)	Length in direction of transport	160; 240; 320
w x l <sub>d</sub> (mm x mm)	Combination options	160 x 160; 240; 320 240 x 160; 240; 320 320 x 160; 240; 320
h <sub>N</sub> (mm)	Nominal stroke	50; 100; 160; 200; 250
AO	Installation location Under the conveyor section (AO = UB) On the machine table (AO = AT) For custom design (AO = O)	UB; AT; O
HA	Lift arrangement Centered (HA = 0) Eccentric (HA = 1)	0; 1 <sup>1</sup>

<sup>1</sup> HA = 1 only when b = 240 mm

**Technical data**

<b>Material number</b>	<b>3842998952</b>		
<b>Load</b>			
Max. total workpiece pallet weight	m <sub>G</sub>	kg	40
<b>Features</b>			
ESD			Yes
<b>Additional information</b>			
Required compressed air connection	p	bar	4 ... 6
Pneumatic connector	∅	mm	8
Repeat accuracy <sup>1</sup>			±0.05
Permissible vertical process forces <sup>2</sup>			400

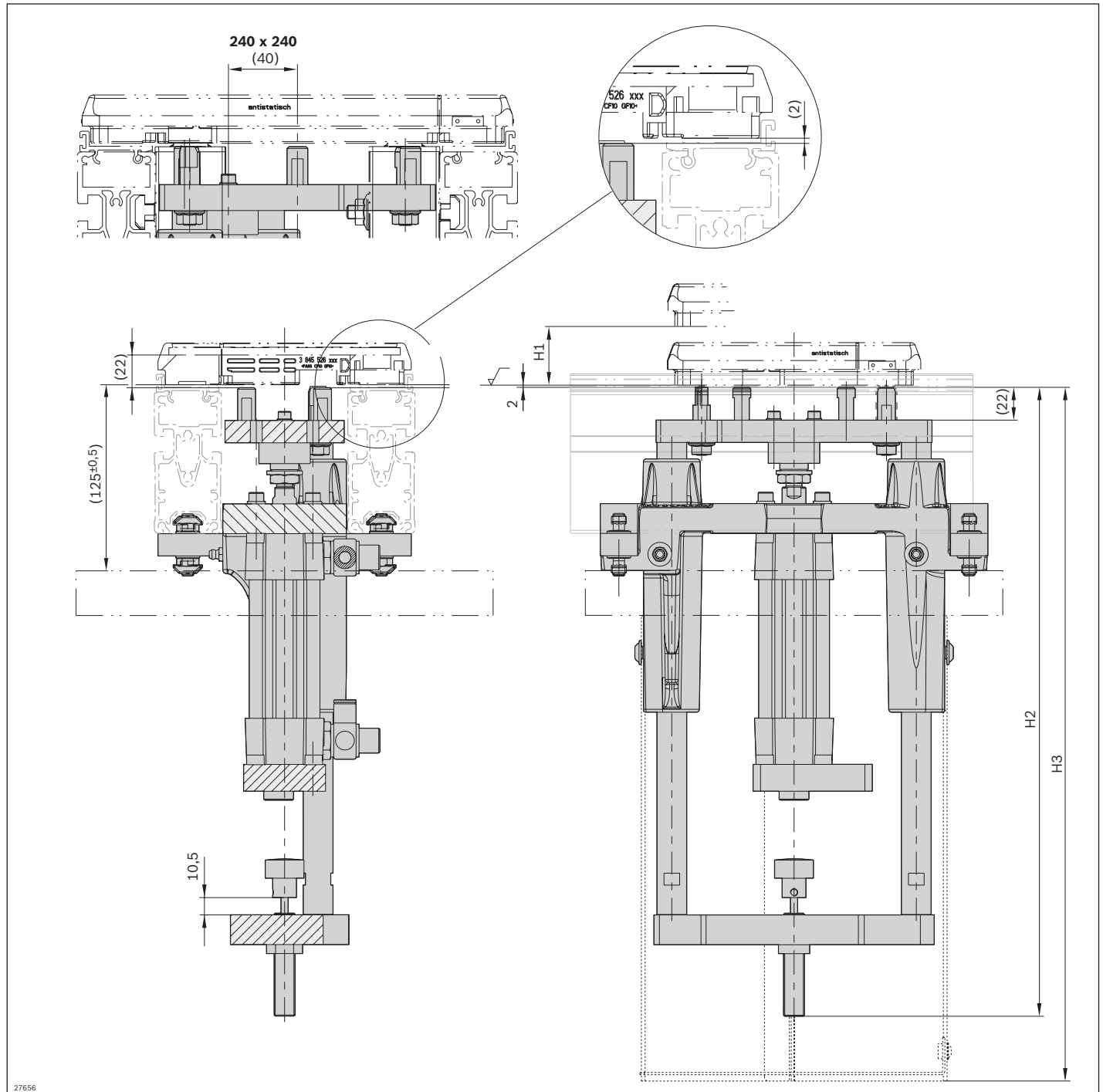
<sup>1</sup> Applies only to strokes of up to 204 mm

<sup>2</sup> Incl. WT 2

**Lift range**

Nominal stroke h <sub>N</sub> (mm)	WT lift above conveying level h <sub>0</sub> (mm)
50	0 ... 28
100	35 ... 78
160	95 ... 138
200	135 ... 178
250	185 ... 228

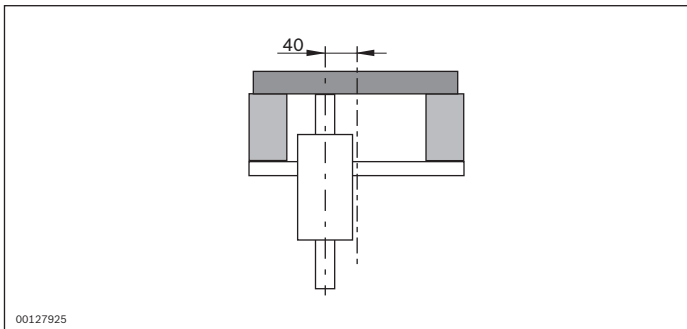
**Dimensions**



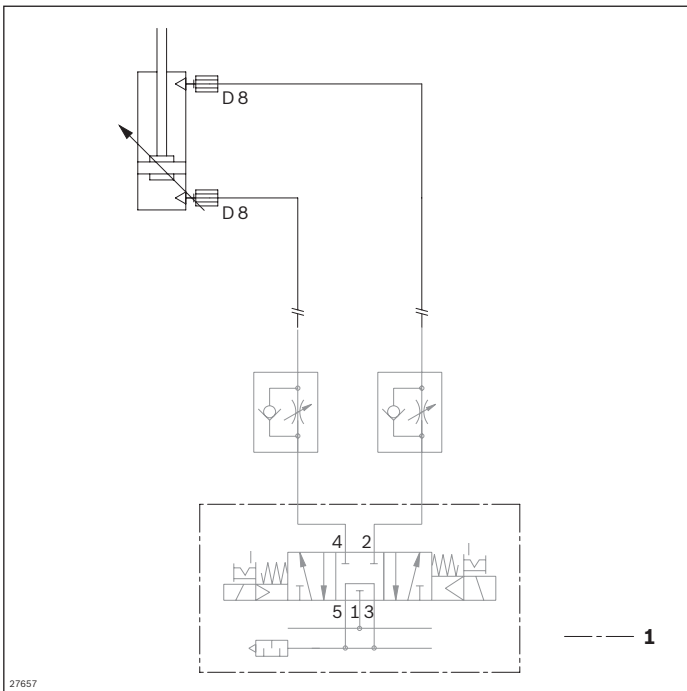
27656

Compressed air (bar)	Lifting force (N)
4	350
5	450
6	550

### Offset lifting cylinder (HA = 1)

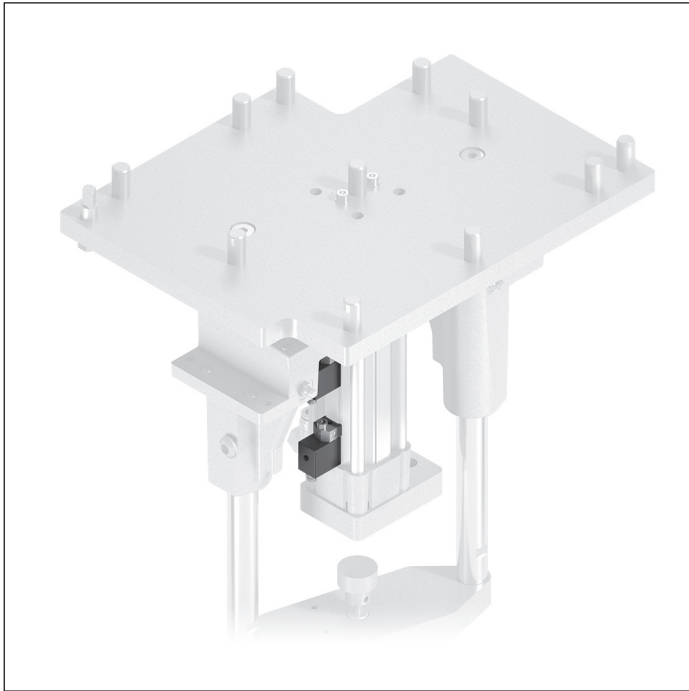


### Circuit diagrams



1 Not included in delivery

## SA cylinder position sensor



- Cylinder switch with clamping holder for lifting cylinder position sensing

**Note:** Position sensor can only be mounted on the side

### Accessories

#### Required accessories

- Connection cable with plug

### Delivery notes

#### Scope of delivery

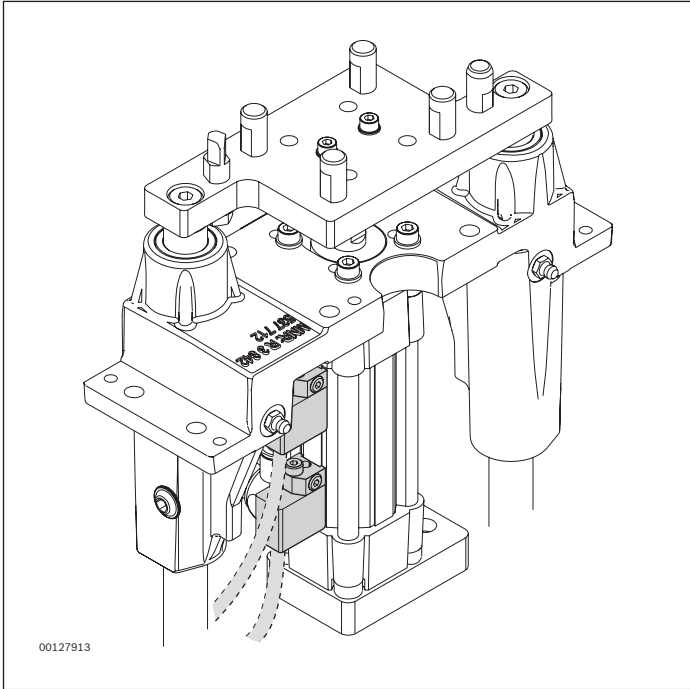
- 2x SN2 series cylinder switch (cube)
- 2x clamping holder for cylinder switch

### Ordering information

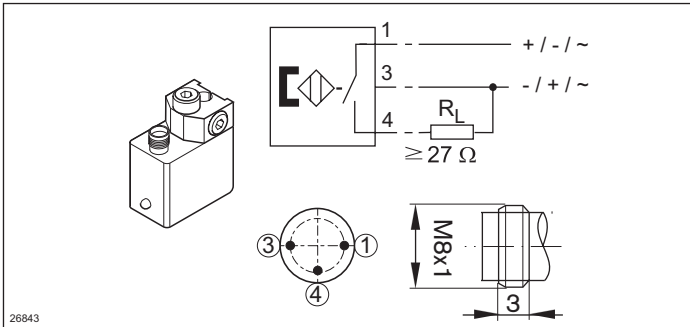
Product designation	Packaging unit	Material number
SA cylinder position sensor	2	3842536974

### Technical data

<b>Material number</b>	<b>3842536974</b> SN2 series cylinder switch (cube)
<b>Features</b>	
Connector	M8x1, without cable
Function indicator	LED
<b>Additional information</b>	
Contact type	Reed, 3-conductor
Operating voltage	AC 12-30, DC 12-36 V



**Circuit diagrams**



## HP 2/L housing element

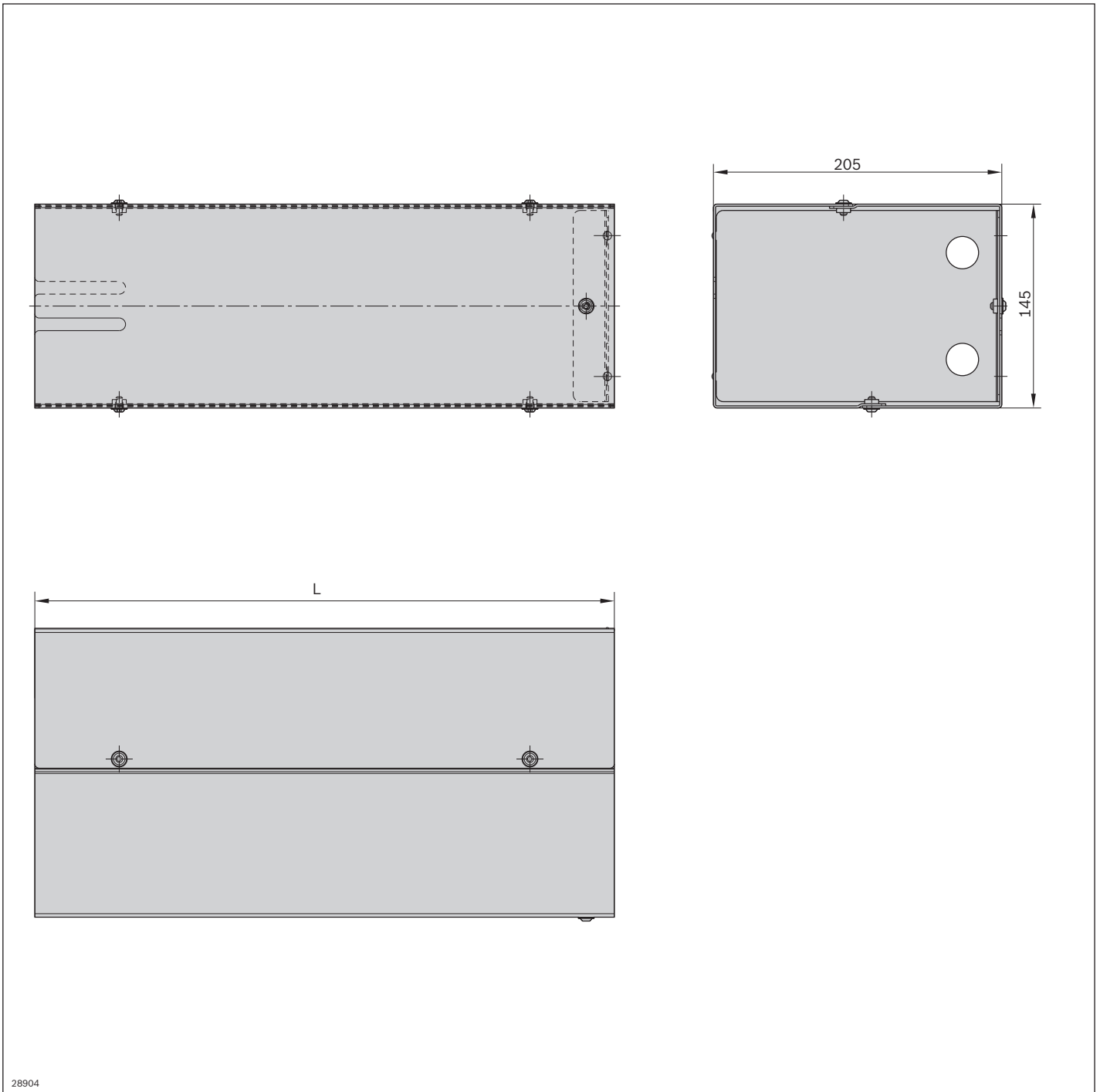


► Housing element for HP 2/L lift positioning unit

### Ordering information

Product designation	Nominal stroke $h_N$ (mm)	Length L (mm)	Material number
HP 2/L housing element	50	315	3842536977
HP 2/L housing element	100	353	3842536960
HP 2/L housing element	160	353	3842536960
HP 2/L housing element	200	715	3842536962
HP 2/L housing element	250	715	3842536962

**Dimensions**

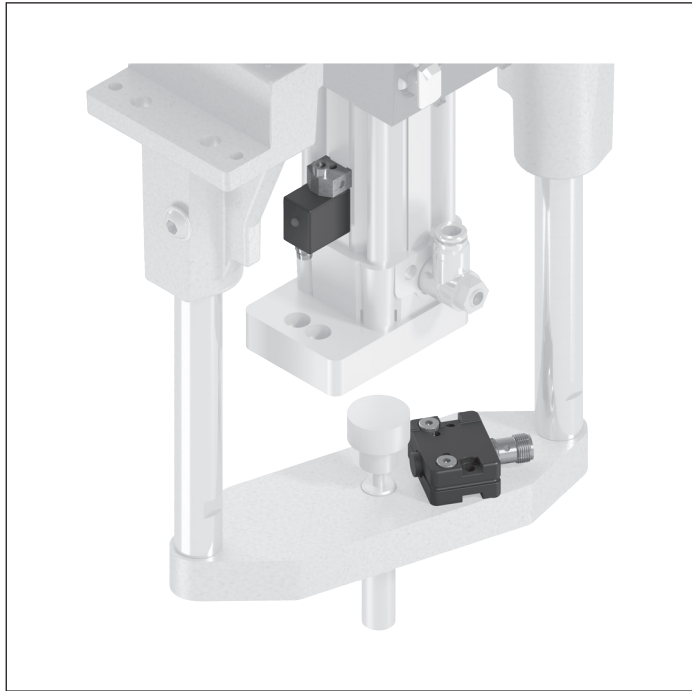


28904

Length L (mm)	Material number
315	3842536977
353	3842536960
715	3842536962



## RA position sensor set



- Position sensor for HP 2/L special design with turret stop

For use with a turret stop (e.g., Somatec), the HP 2/L can be ordered with longer guide rails as a modification. An accompanying sensor is used instead of the cylinder

switch to sense the upper positions on the turret stop (RA position sensor set).

### Delivery notes

#### Scope of delivery

- 1x SN 2 series cylinder switch (cube)
- 1x clamping holder for cylinder switch
- 1x M12x1 sensor with  $S_N=8$  mm rated sensing range, length 50 mm (3842557633), see p. 8-108

- 1x switch bracket for mounting on the base plate

### Ordering information

Product designation	Material number
RA position sensor	3842536975

### Circuit diagrams

