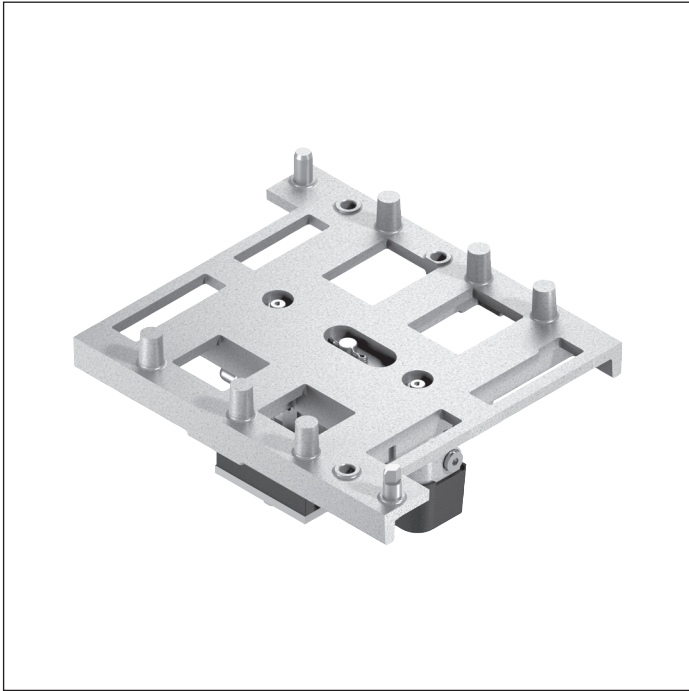
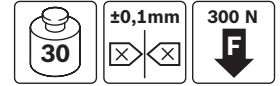


## PE 2 positioning unit



- ▶ To position a workpiece pallet in a manual/automatic processing station
- ▶ For high positioning accuracy requirements up to  $\pm 0.1$  mm
- ▶ Can be combined with all WT 2 and WT 2/F workpiece pallets up to 400 x 400 mm

### Accessories

#### Required accessories

- ▶ VE 2/... stop gate, see p. 8-4
- ▶ Pneumatic equipment, connectors

### Delivery notes

#### Scope of delivery

- ▶ Incl. fastening material

### Recommended accessories

- ▶ Position sensor kit for PE 2, see p. 7-12

### Condition on delivery

- ▶ Fully assembled

**Ordering information**

Product designation	Positioning unit w x l <sub>d</sub> (mm)	Material number
PE 2 positioning unit	160 x 160	3842504706
PE 2 positioning unit	160 x 240	3842504707
PE 2 positioning unit	160 x 320	3842504708
PE 2 positioning unit	240 x 160	3842504710
PE 2 positioning unit	240 x 240	3842504711
PE 2 positioning unit	240 x 320	3842504712
PE 2 positioning unit	240 x 400	3842504713
PE 2 positioning unit	320 x 160	3842504714
PE 2 positioning unit	320 x 240	3842504715
PE 2 positioning unit	320 x 320	3842504716
PE 2 positioning unit	320 x 400	3842504717
PE 2 positioning unit	400 x 320	3842504718
PE 2 positioning unit	400 x 400	3842504719

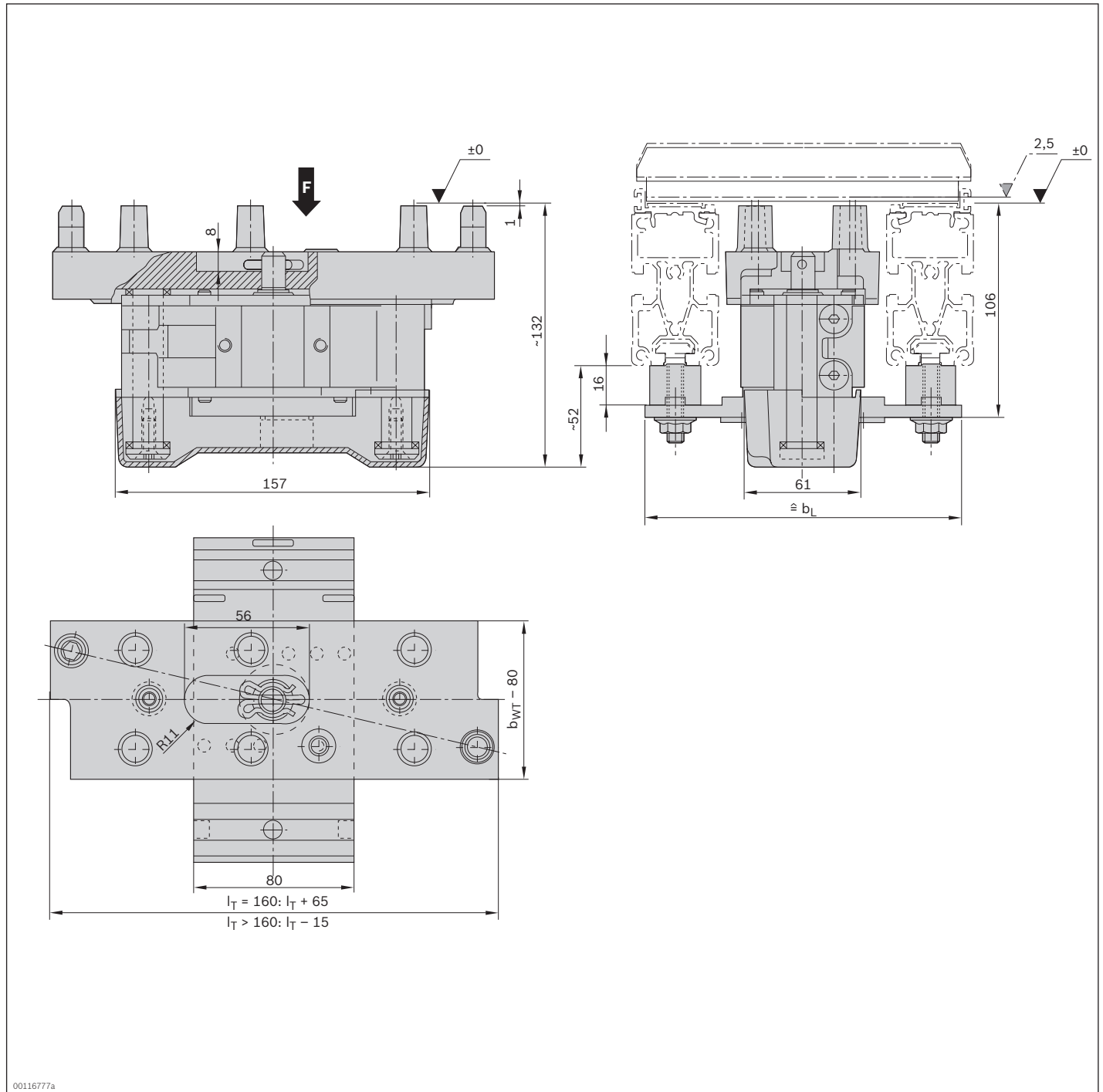
**Technical data**

<b>Material number</b>	<b>3842504706</b>	<b>3842504712</b>	<b>3842504716</b>
	<b>3842504707</b>	<b>3842504713</b>	<b>3842504717</b>
	<b>3842504708</b>	<b>3842504714</b>	<b>3842504718</b>
	<b>3842504710</b>	<b>3842504715</b>	<b>3842504719</b>
	<b>3842504711</b>		
<b>Load</b>			
Max. total workpiece pallet weight	m <sub>G</sub>	kg	30
<b>Features</b>			
ESD			Yes
<b>Additional information</b>			
Required compressed air connection	p	bar	4 ... 6
Pneumatic connector <sup>1</sup>	∅	mm	G1/8"
WT lift above conveying level		mm	2.5
Repeat accuracy		mm	±0.1
Permissible vertical process forces <sup>2</sup>		N	300

<sup>1</sup> Connector for G1/8" thread must be attached by customer

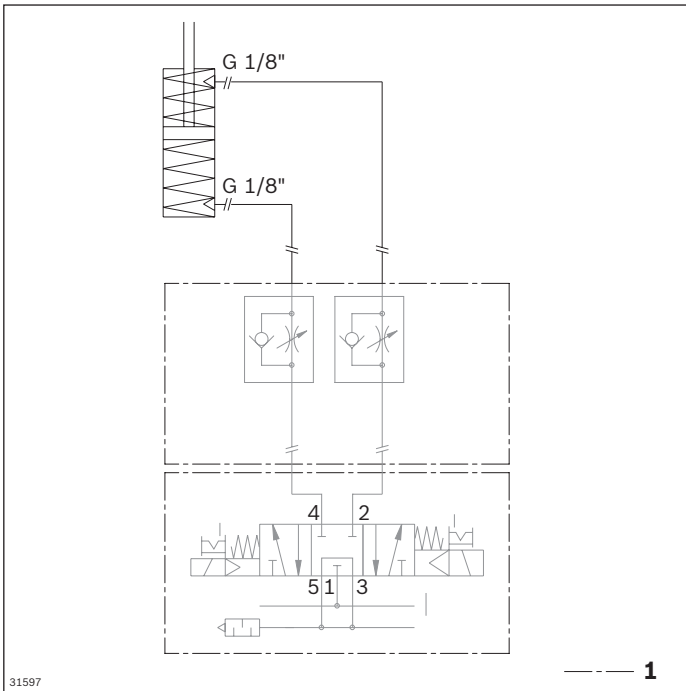
<sup>2</sup> Incl. WT 2

**Dimensions**



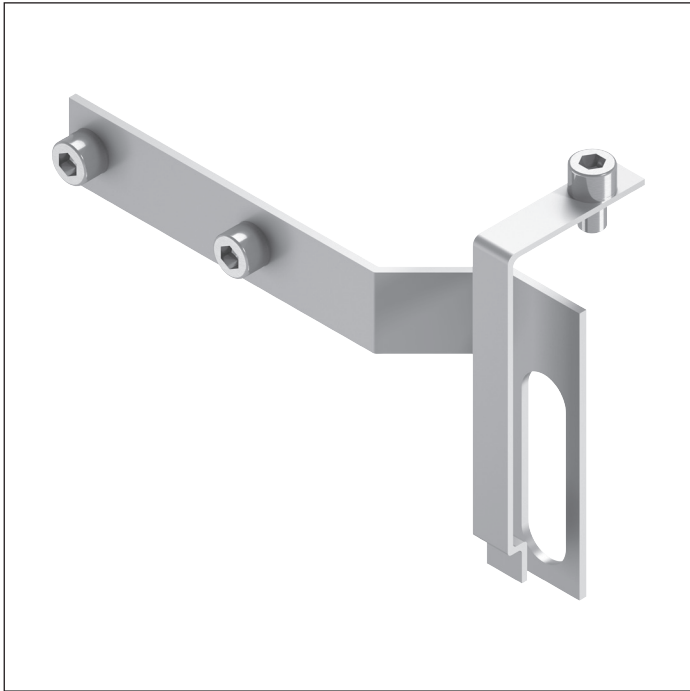
00116777a

**Circuit diagram**



1 Not included in delivery

## Position sensor kit for PE 2



► For position sensor for PE 2 positioning unit

### Accessories

#### Required accessories

- PE 2 positioning unit, see p. 7-8
- M12x1 sensor with  $S_N = 4$  mm rated sensing range, see p. 8-108

### Ordering information

Product designation	Material number
Position sensor kit for PE 2	3842508933

**Technical data**

