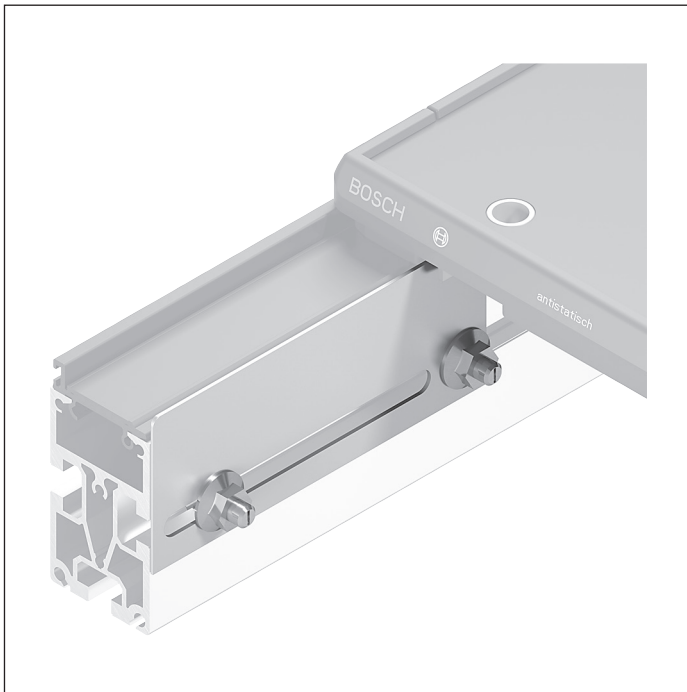


Workpiece pallet inner guide



- ▶ Easy mounting on conveyor sections
- ▶ Positioning with the guide groove on the WT 2 workpiece pallet
- ▶ Can be combined with all WT 2, WT 2/F and WT 2/E workpiece pallets

7

Using a workpiece pallet inner guide and a VE 2 stop gate, a workpiece pallet with low requirements can be

positioned at the repeat accuracy (± 0.5 mm), i.e., for manual assembly processes.

Accessories

Required accessories

- ▶ VE 2/... stop gate, see p. 8-4

Delivery notes

Scope of delivery

- ▶ Including fastening material for installation on the ST 2 conveyor section or BS 2 belt section.

Condition on delivery

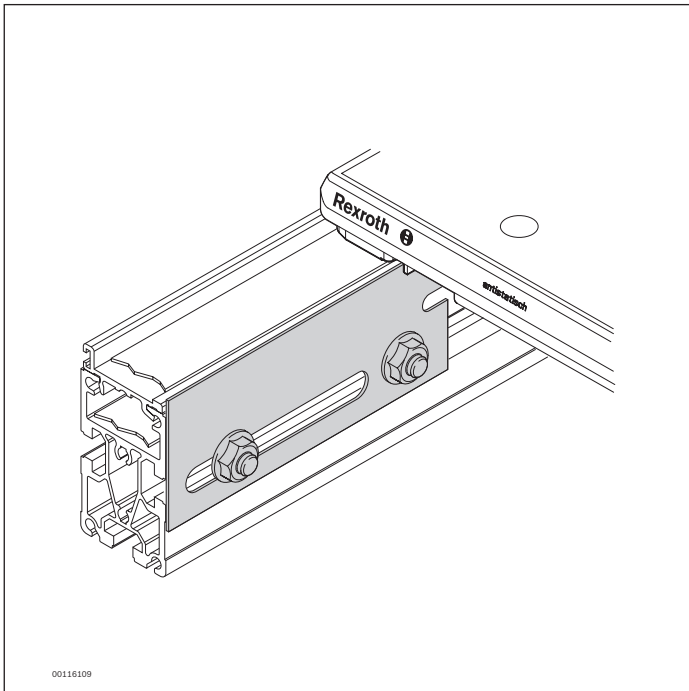
- ▶ Not assembled

Ordering information

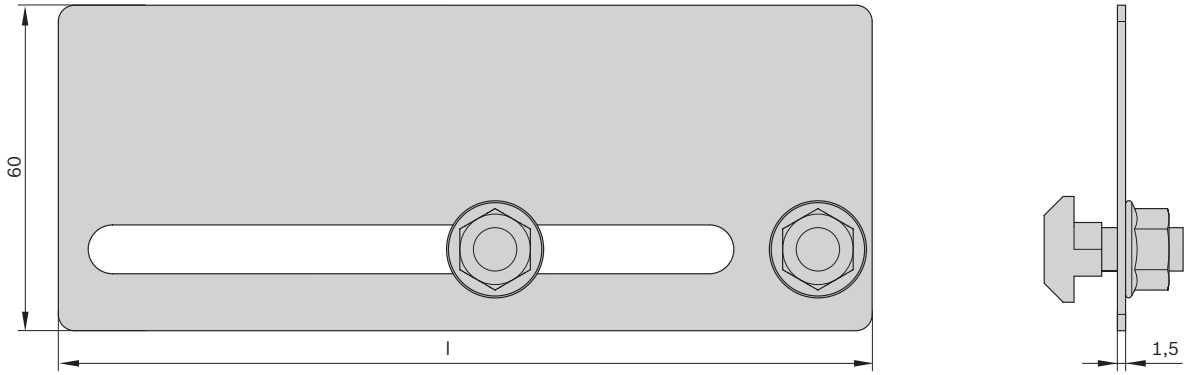
Product designation	Length l (mm)	Material number
Workpiece pallet inner guide	45	3842525634
Workpiece pallet inner guide	150	0842601001
Workpiece pallet inner guide	300	0842601003
Workpiece pallet inner guide	450	0842601004
Workpiece pallet inner guide	600	0842601006

Technical data

Material number			0842601001	0842601003	0842601004	0842601006	3842525634
Features							
ESD			Yes	Yes	Yes	Yes	Yes
Material specification			Steel; stainless	Steel; stainless	Steel; stainless	Steel; stainless	Steel; stainless
Dimensions							
Length	l	mm	150	300	450	600	45
Additional information							
Repeat accuracy		mm	±0.5	±0.5	±0.5	±0.5	±0.5



Dimensions



23753