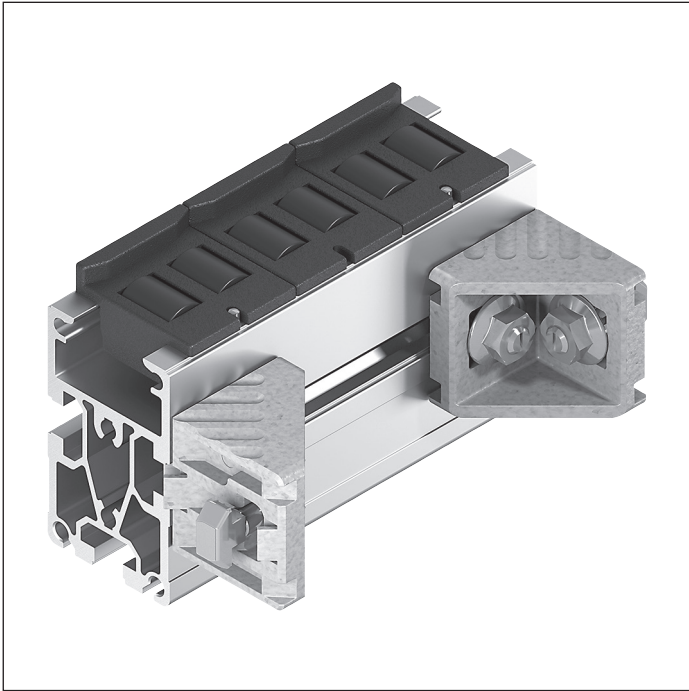
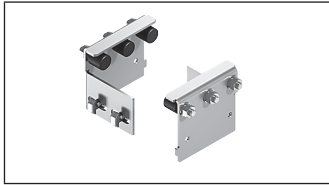


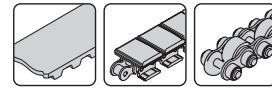
Roller sections



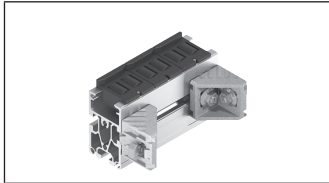
Roller sections in conjunction with two lift transverse units permit workpiece pallets to be conveyed between parallel conveyor sections.



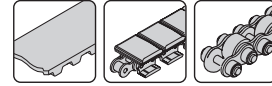
Intermediate section with roller



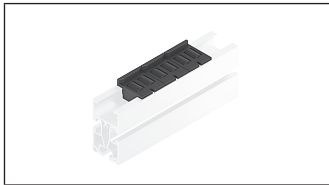
5-82



RS 2 roller section

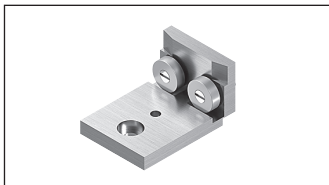


5-84



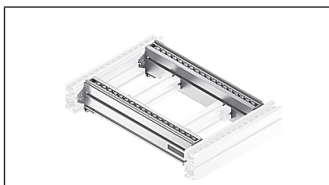
RE roller elements

5-86



RB 2/UM 2 roller track set

5-88

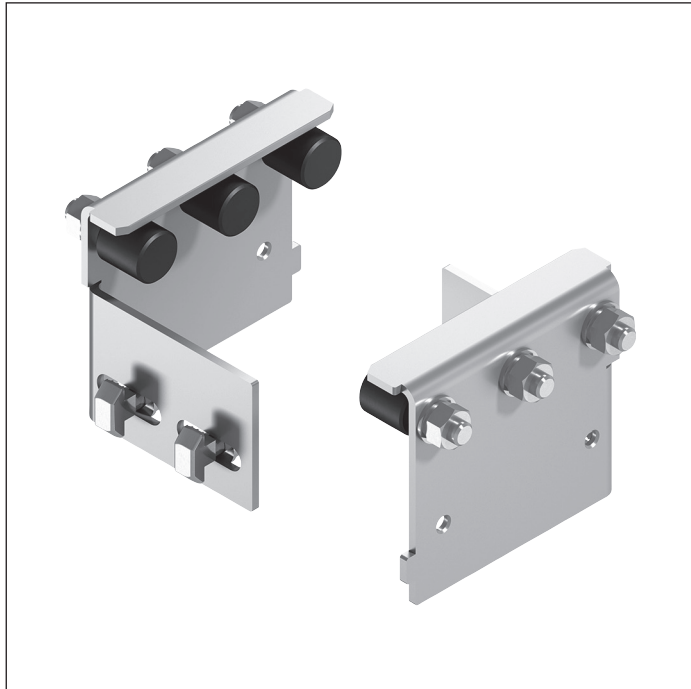
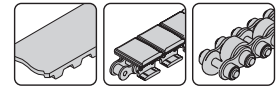


RS 2/H roller section



5-90

Intermediate section with roller



- ▶ Unmounted roller section for transverse workpiece pallet conveyance between parallel conveyor sections at a distance of $a = 45$ to 135 mm
- ▶ Use with two HQ 2 lift transverse units
- ▶ Without built-in drive
- ▶ Conveyor medium: Rollers made of galvanized steel
- ▶ Reversible operation possible
- ▶ Suitable for mounting on an ST 2 section with a profile width of 45 mm or an ST 2/...-H section with a profile width of 50 mm
- ▶ Can be combined with WT 2, WT 2/F, WT 2/H and WT 2/F-H

Installation between two ST 2 conveyor units or BS 2 belt sections.

Alternatively, use as an inclined passive conveyor section.

Delivery notes

Scope of delivery

- ▶ Incl. fastening material

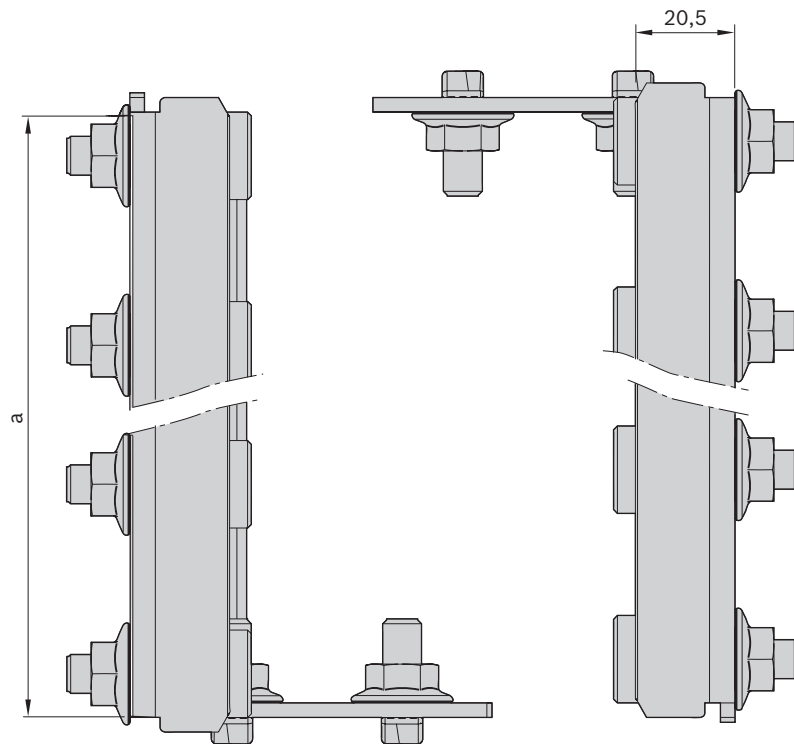
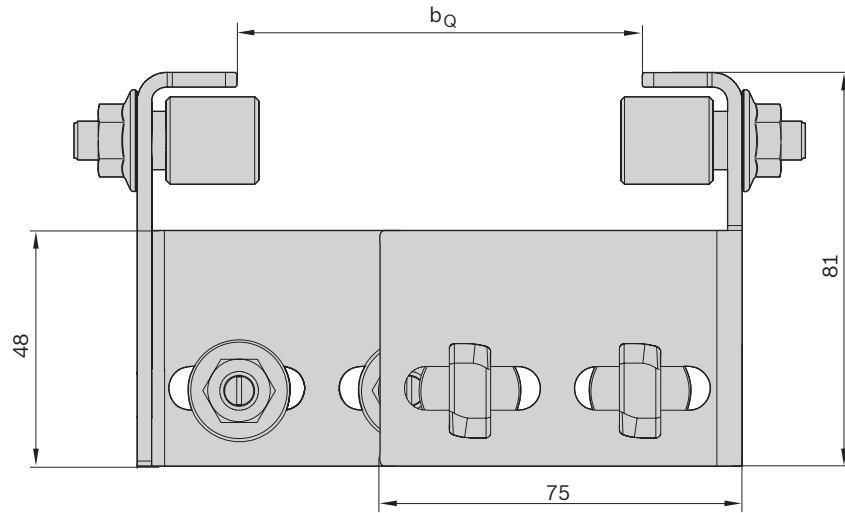
Condition on delivery

- ▶ Not assembled

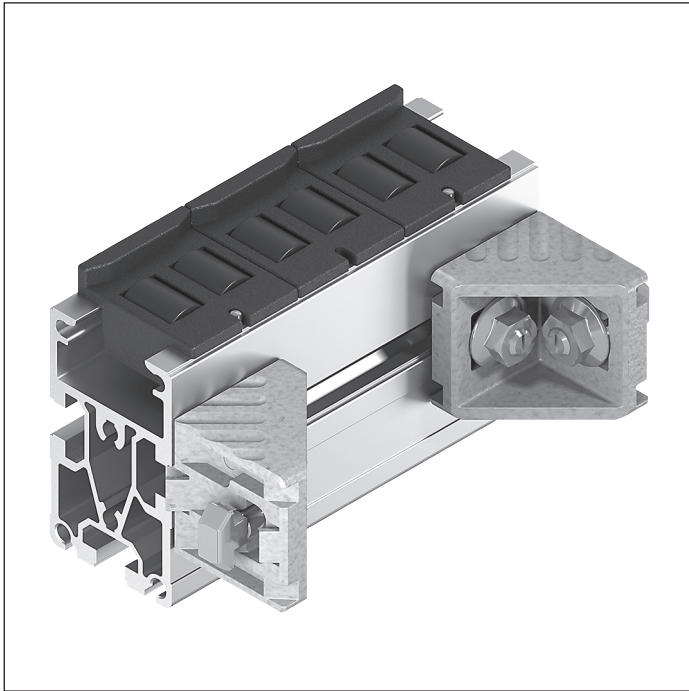
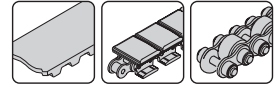
Ordering information

Product designation	Material number
Intermediate section with roller $a = 45$	3842553814
Intermediate section with roller $a = 90$	3842554658
Intermediate section with roller $a = 135$	3842554659

Dimensions



RS 2 roller section



- ▶ Unmounted roller section for transverse workpiece pallet conveyance between parallel conveyor sections at a distance of $a = 90$ to 200 mm
- ▶ Use with two HQ 2 lift transverse units
- ▶ Use as an inclined passive conveyor section is possible
- ▶ Without built-in drive
- ▶ Conveyor medium: PA6 rollers
- ▶ Reversible operation possible
- ▶ Suitable for mounting on an ST 2 section with a profile width of 45 mm or an ST 2/...-H section with a profile width of 50 mm
- ▶ Can be combined with WT 2, WT 2/F, WT 2/H and WT 2/F-H

Installation between two ST 2 conveyor units or BS 2 belt sections.

Alternatively, use as an inclined passive conveyor section.

Delivery notes

Scope of delivery

- ▶ Incl. fastening material

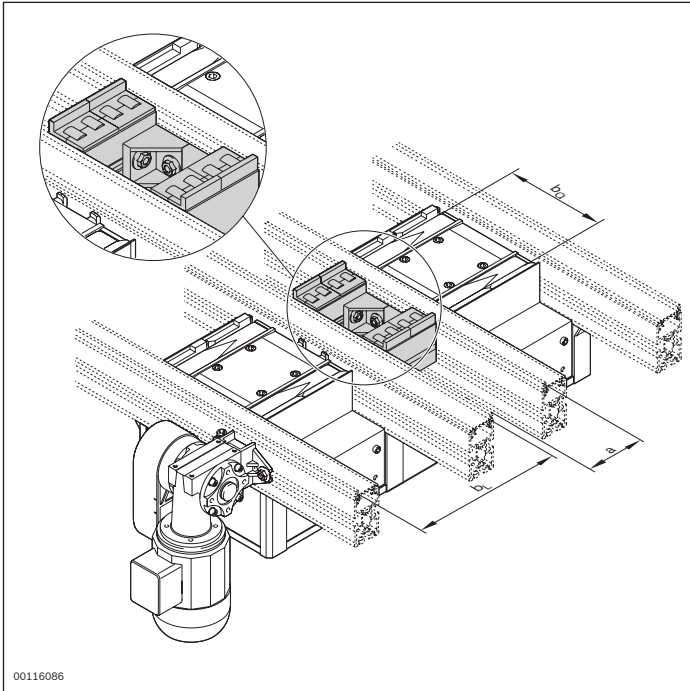
Condition on delivery

- ▶ Not assembled

Ordering information

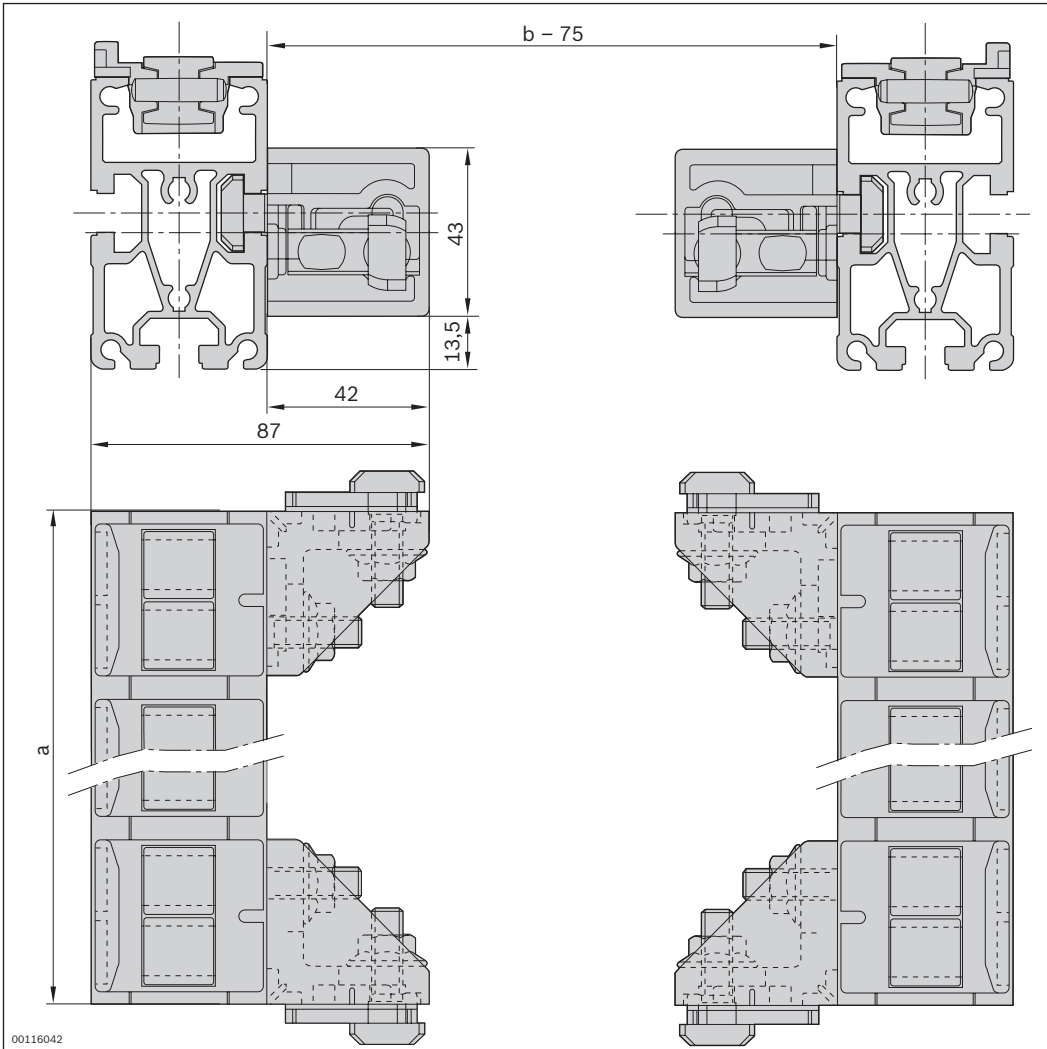
Product designation	Material number
RS 2 roller section $a = 90$	3842522140
RS 2 roller section $a = 135$	3842522141
RS 2 roller section $a = 160$	3842522142
RS 2 roller section $a = 200$	3842522143

Technical data



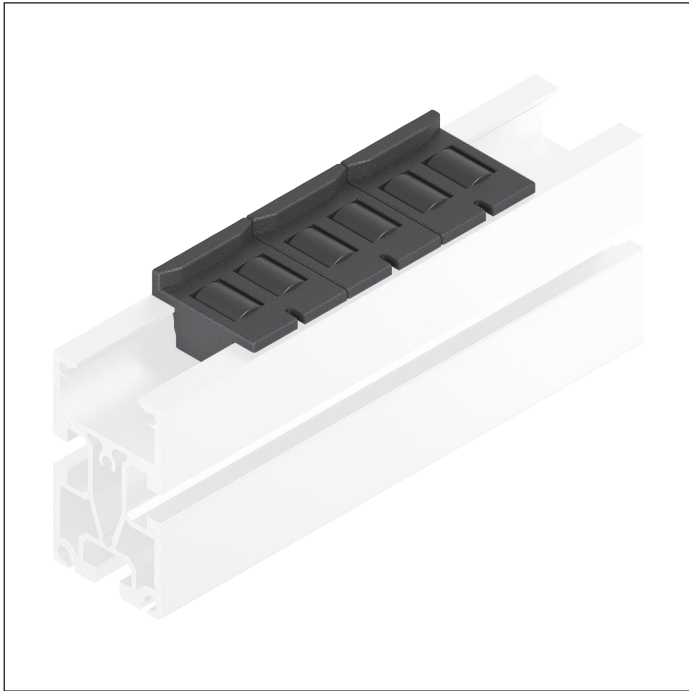
00116086

Dimensions



00116042

RE roller element



- ▶ Assembled roller elements for the manual transportation of workpiece pallets
- ▶ Use as an inclined passive conveyor section is possible
- ▶ Without built-in drive
- ▶ Conveyor medium: PA66 rollers
- ▶ Reversible operation possible
- ▶ Can be combined with WT 2/E, WT 2, WT 2/F, WT 2/H and WT 2/F-H

Roller elements can be clipped into SP 2/B section profiles instead of driven belts. Roller sections constructed in this way are an economical solution for moving workpiece pallets or other similar pallets manually on a transfer system.

The number of roller elements is calculated based on the section length. The remaining measurement < 45 mm has to be distributed by spacing the roller elements accordingly.

Accessories

Required accessories

- ▶ SP 2/B section profile, see p. 3-4

Delivery notes

Condition on delivery

- ▶ Fully assembled

Ordering information

Product designation	Packaging unit	Material number
RB 39 roller element	10	3842520000
ESD RE 39 roller element ¹	10	3842538245
RB 45 roller element	100	3842319501
ESD RE 45 roller element ¹	100	3842538064
RE 45 roller element	100	3842319500
ESD SK RE 45 roller element ¹	100	3842538065

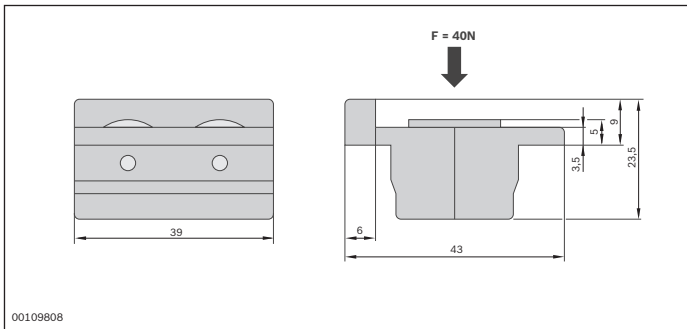
¹ Version with conductive material in accordance with DIN EN 61 340-5-1, suitable for ESD-sensitive areas.

Technical data

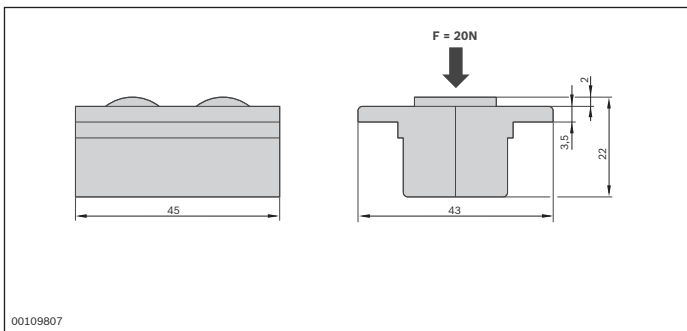
Material number	RE 39	3842520000	3842538245
	RE 45	3842319501	3842538064
	RE 45SK	3842319500	3842538065
Features			
ESD		No	Yes
Material specification		RE 39, RE 45, RE 45SK: Rollers: PA66 Housing: PA6 RE 39: Bearing: Steel bolt	RE 39, RE 45, RE 45SK: Rollers: PA66 Housing: PA6 RE 39: Bearing: Steel bolt

Dimensions

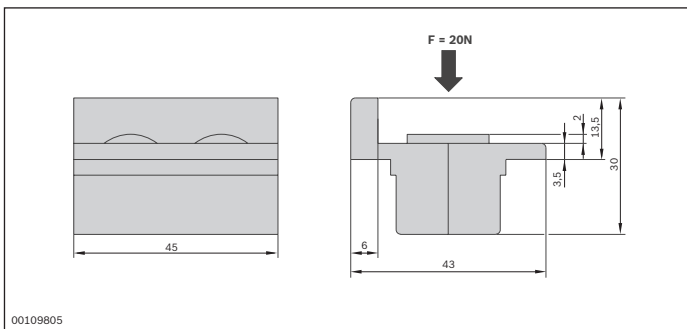
RE 39



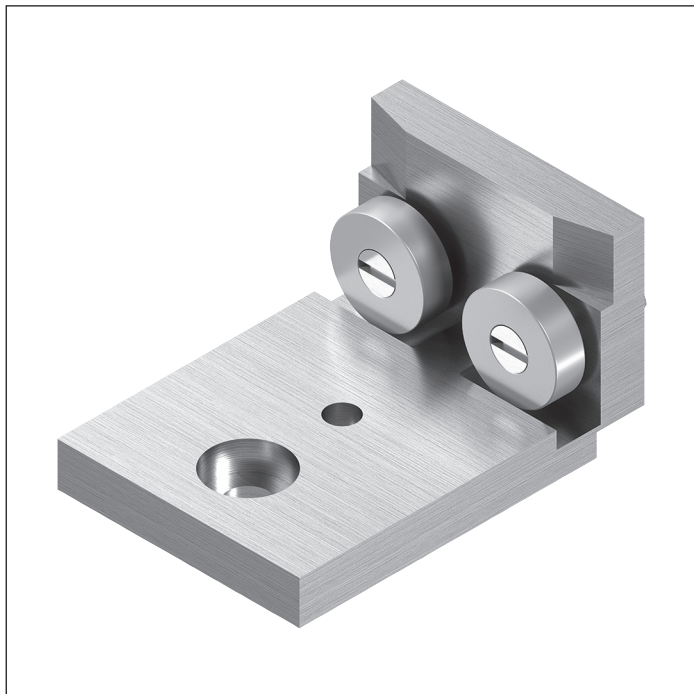
RE 45



RE 45 SK



RB 2/UM 2 roller track set



- ▶ Mounted roller section for mounting on AS 2/B or UM 2/B for transverse conveying
- ▶ Additional workpiece pallet support on the front transition from AS 2/B to UM 2/B or from AS 2/B or UM 2/B to a lift transverse unit
- ▶ One set is required for each AS 2/B or UM 2/B
- ▶ Required for workpiece pallet lengths of 160 mm; recommended for longer lengths
- ▶ Without drive
- ▶ Reversible operation possible
- ▶ Can be combined with WT 2/E, WT 2, WT 2/F

Delivery notes

Scope of delivery

- ▶ Set (containing 2x roller track, 2x guide profile, 2x fastening kit)

Condition on delivery

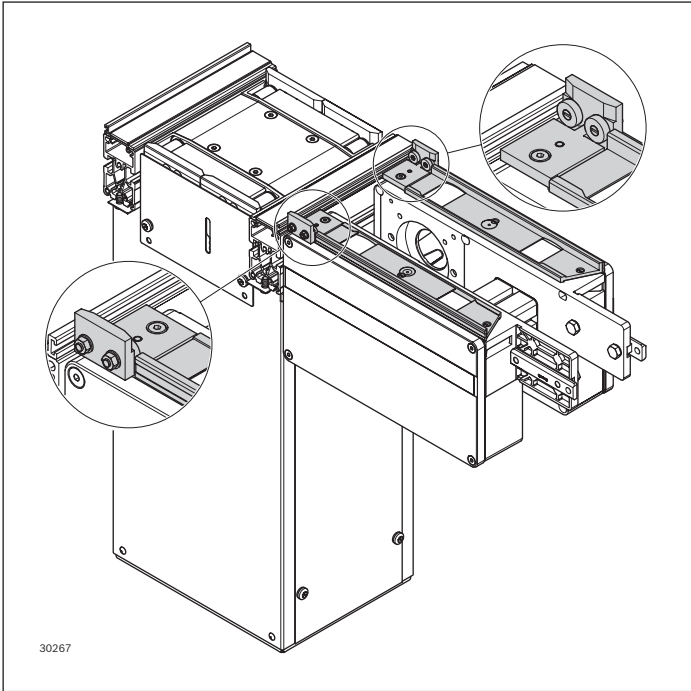
- ▶ Fully assembled

Ordering information

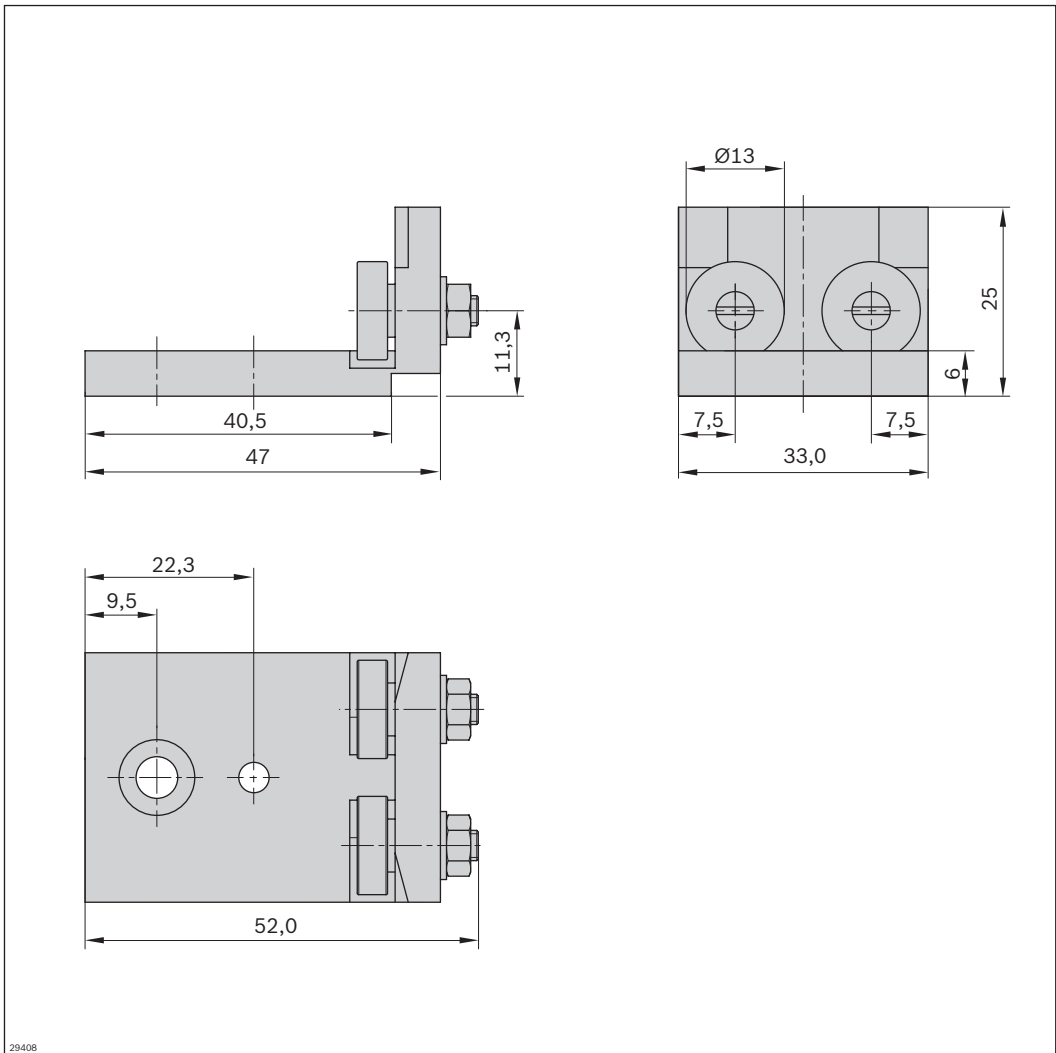
Product designation	Packaging unit	Material number
RB 2/UM 2 roller track set	Set	3842558657

Technical data

Material number	3842558657
Features	
Material specification	Track: Aluminum Rollers: Steel

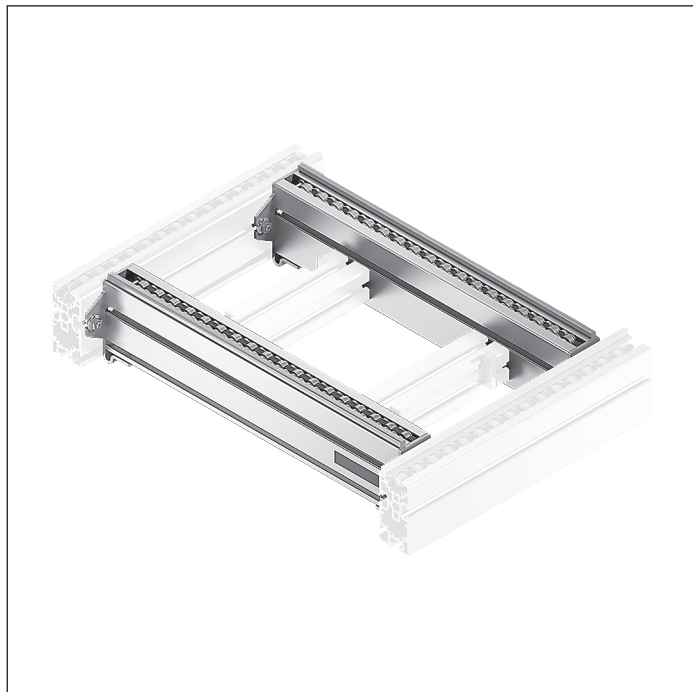


Dimensions



29408

RS 2/H roller section



- ▶ Mounted roller section for transverse workpiece pallet conveyance between parallel conveyor sections at a distance of $a = 90$ to 690 mm
- ▶ Use with two HQ 2 lift transverse units
- ▶ Without built-in drive
- ▶ Conveyor medium: Accumulation roller chain with steel accumulation rollers and small parts protection
- ▶ Suitable for mounting on an ST 2 section with a profile width of 45 mm or an ST 2/...-H section with a profile width of 50 mm
- ▶ Can be combined with WT 2/E, WT 2, WT 2/F, WT 2/H and WT 2/F-H

Installation between two ST 2/...-H conveyor units or BS 2/...-H belt sections with HQ 2/U-H or HQ 2/C-H lift

transverse unit. Alternatively, use as an inclined conveyor section is possible.

Accessories

Recommended accessories

- ▶ Note on QV cross connectors: When conveyor section distances $a > 90$ mm, we recommend stabilizing the RS 2/H roller section using QV cross connectors, see p. 5-92

Delivery notes

Scope of delivery

- ▶ Section, incl. accumulation roller chain with steel accumulation rollers and small parts protection
- ▶ Incl. fastening material

Condition on delivery

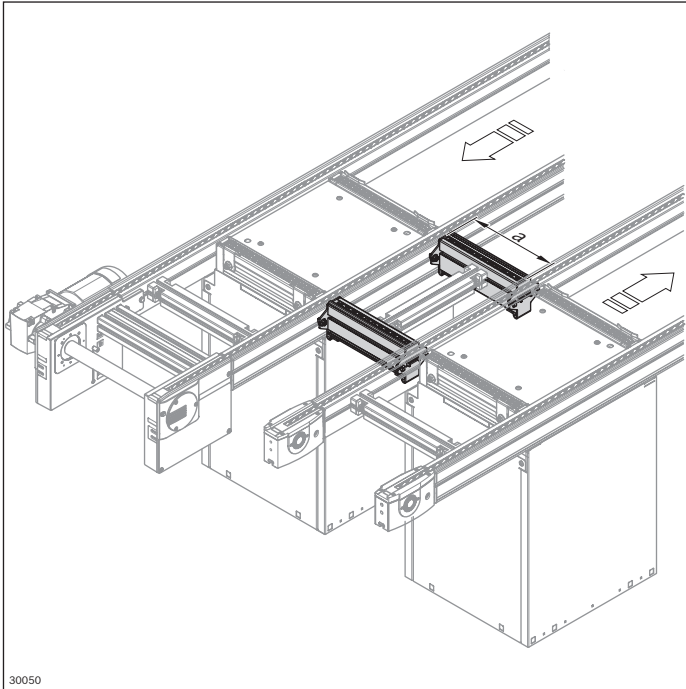
- ▶ Fully assembled

Ordering information

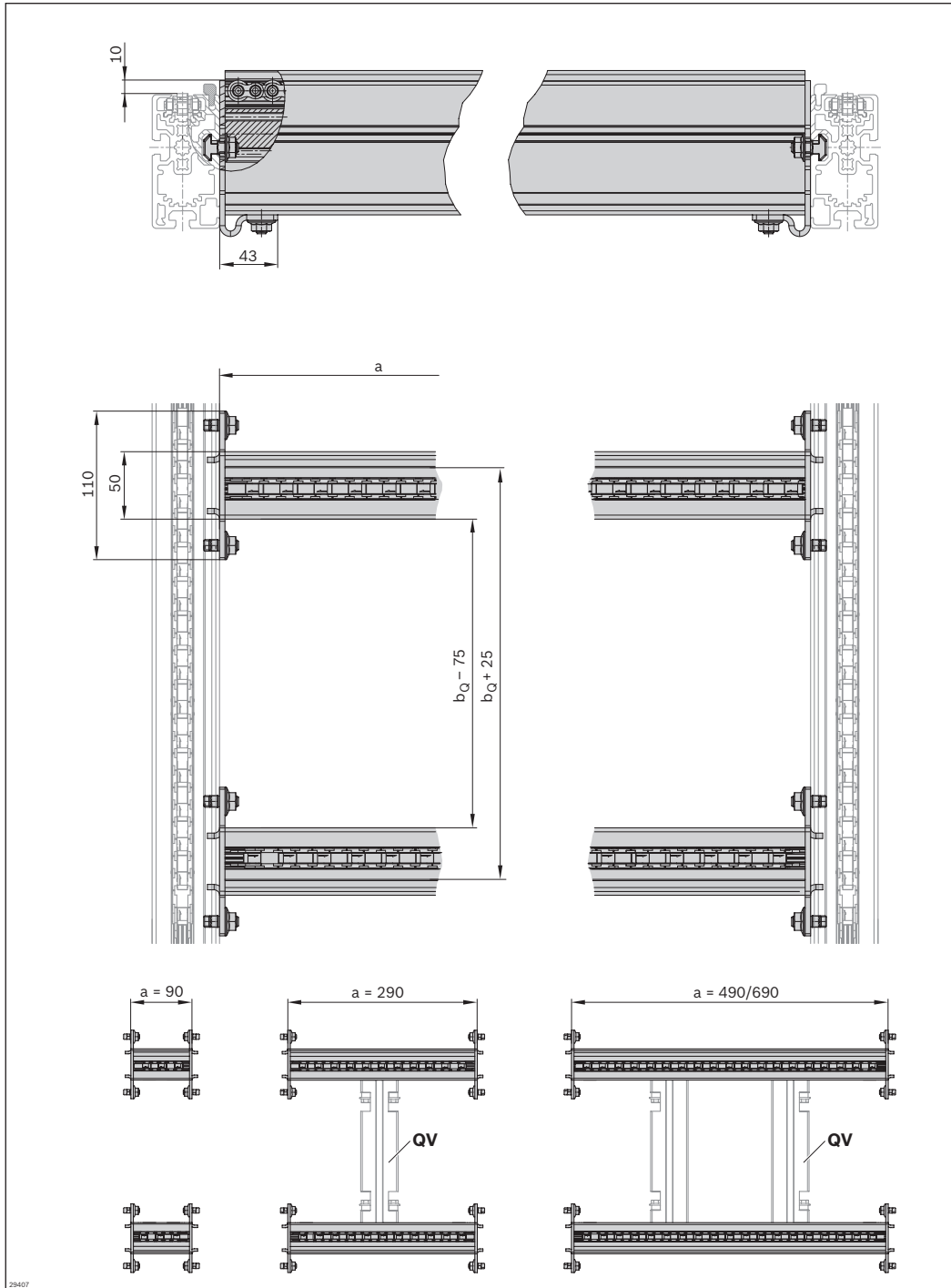
Product designation	a (mm)	b ₁ (mm)	Material number
RS 2/H roller section	90	480; 640; 800; 1040; 1200	3842998744
	290	640; 800; 1040; 1200	3842998744
	490	800; 1040; 1200	3842998744
	690	1040; 1200	3842998744

Technical data

Material number	3842998744
Features	
Material specification	Section profile: Aluminum, natural; anodized Accumulation roller chain: Steel accumulation rollers and small parts protection
Dimensions	
a (mm)	Roller section length 90 ... 690



Dimensions



29407

a (mm)	Number of QVs	QV material number
90	-	-
290	1	3842993052/b = b_Q
490	2	3842994635/b = b_Q
690	2	3842994635/b = b_Q