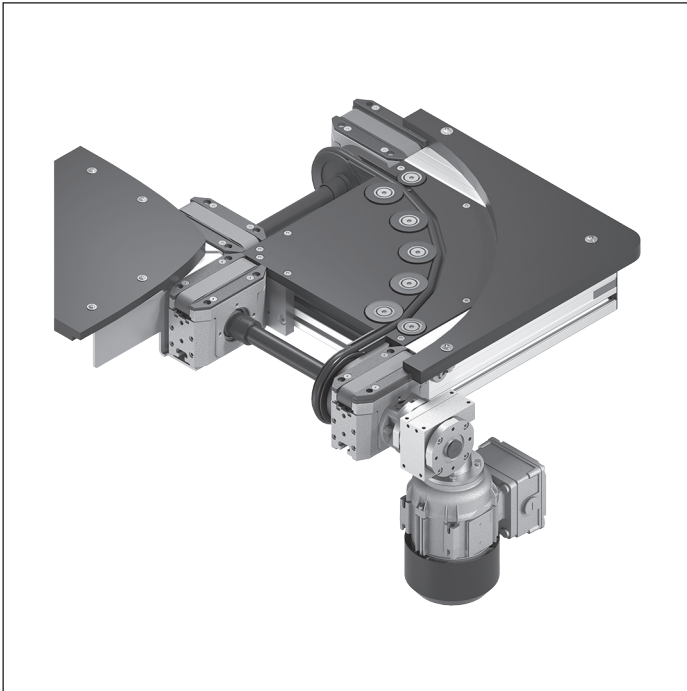


KE 2/90 curve



- ▶ 90° curve conveying of the workpiece pallet
- ▶ Max. total workpiece pallet weight = 20 kg
- ▶ Conveyor medium: Round belt (suitable for use in an EPA)
- ▶ Intended for grease-free and oil-free environments
- ▶ Can be combined with WT 2 and WT 2/F

Note: Accumulation operation not permitted.

The KE 2 curves with round belt conveyor medium have a built-in drive at the curve end. They can be used to

combine the longitudinal section with belts or toothed belts.

Accessories

Recommended accessories

- ▶ Connection kits, see p. 4-40
- ▶ SZ 2 leg sets/..., see p. 6-2

Delivery notes

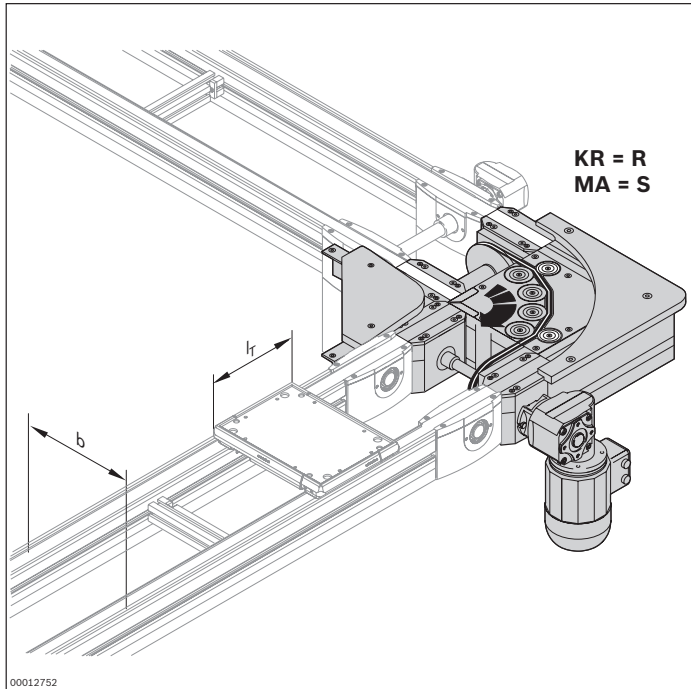
Scope of delivery

- ▶ Curve; complete with drive motor

Condition on delivery

- ▶ Partially assembled
- ▶ Inner guide and motor included

Ordering information



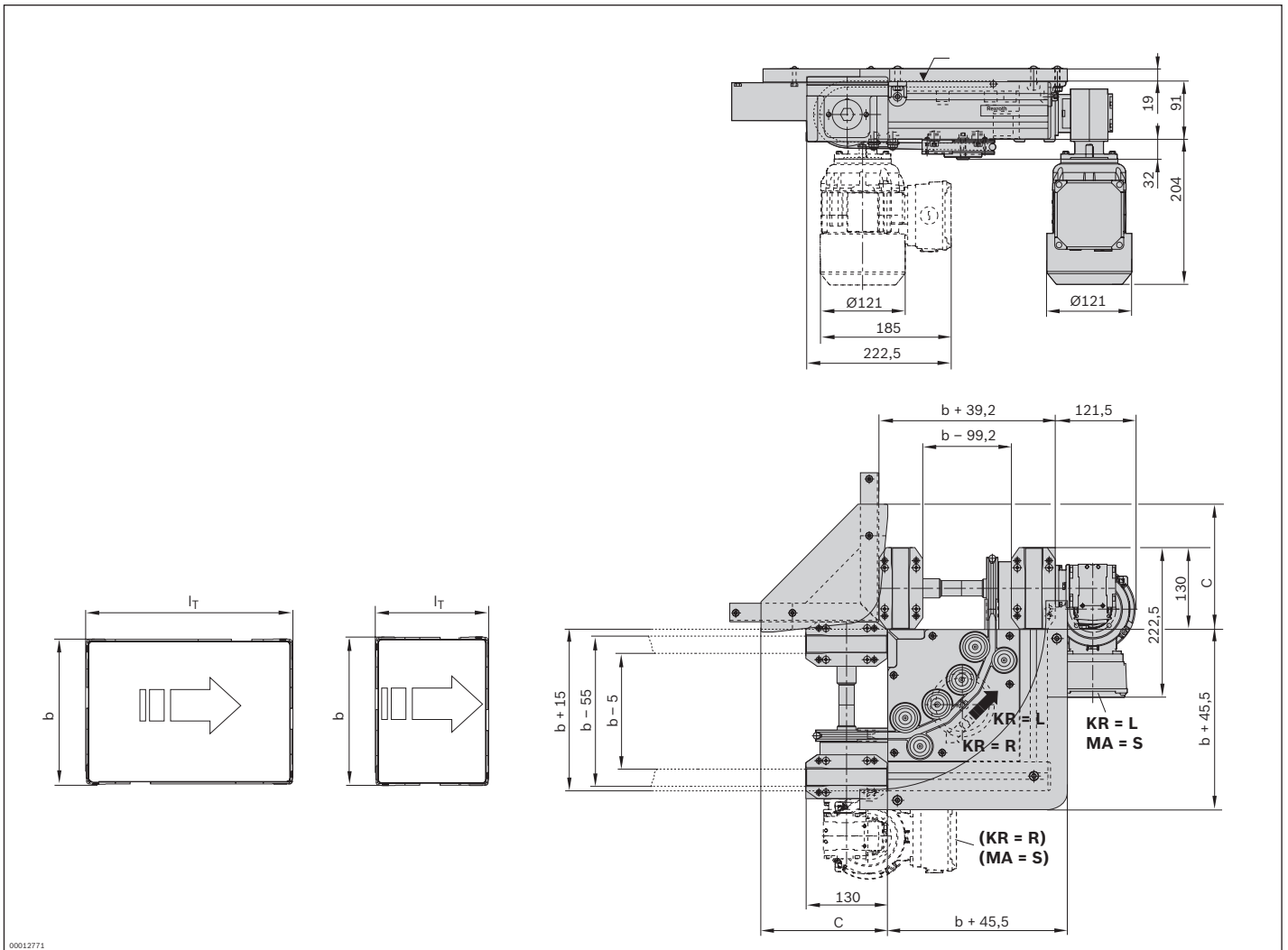
Material number		3842999727
b (mm)	Track width in direction of transport	160; 240; 320; 400
l_T (mm)	Length in direction of transport	160; 240; 320; 400
$w \times l_T$ (mm x mm)	Combination options	160 x 160; 240 x 160; 240; 320; 320 x 240; 320; 400; 400 x 320; 400
v_N (m/min)	Nominal speed	0; 6; 9; 12; 15; 18
U (V)	Voltage	See motor data, p. 11-24ff
f (Hz)	Frequency	See motor data, p. 11-24ff
AT	Motor connection S = cable/plug K = terminal box	S; K
MA	Motor mounting M = center ¹⁾ S = side	M; S
KR	Curve direction R = right L = left	R; L

¹⁾ MA = M only when $b \geq 320$ mm

Technical data

Material number		3842999727
Load		
Max. total workpiece pallet weight	m_G	kg 20
Features		
ESD		Yes

Dimensions

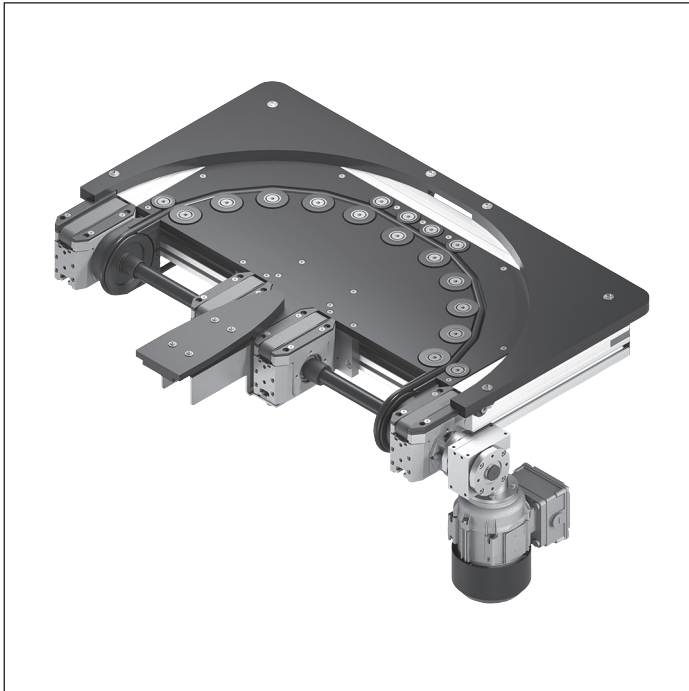


b Track width in direction of transport

l_T Length in conveyor direction

Track width in direction of transport b (mm)	Length in direction of transport l_T (mm)	Dimension C (mm)
160	160	170
160	240	225
240	160	200
240	240	200
240	320	200
320	240	290
320	320	290
320	400	290
400	320	355
400	400	355

KE 2/180 curve



- ▶ 180° curve conveying of the workpiece pallet
- ▶ Curve module with built-in drive
- ▶ Max. total workpiece pallet weight = 20 kg
- ▶ Conveyor medium: Round belt (suitable for use in an EPA)
- ▶ Intended for grease-free and oil-free environments
- ▶ Can be combined with WT 2 and WT 2/F

Note: Accumulation operation not permitted.

The KE 2 curves with round belt conveyor medium have a built-in drive at the curve end. They can be used to

combine the longitudinal section with belts or toothed belts.

Accessories

Recommended accessories

- ▶ Connection kits, see p. 4-40
- ▶ SZ 2 leg sets/..., see p. 6-2

Delivery notes

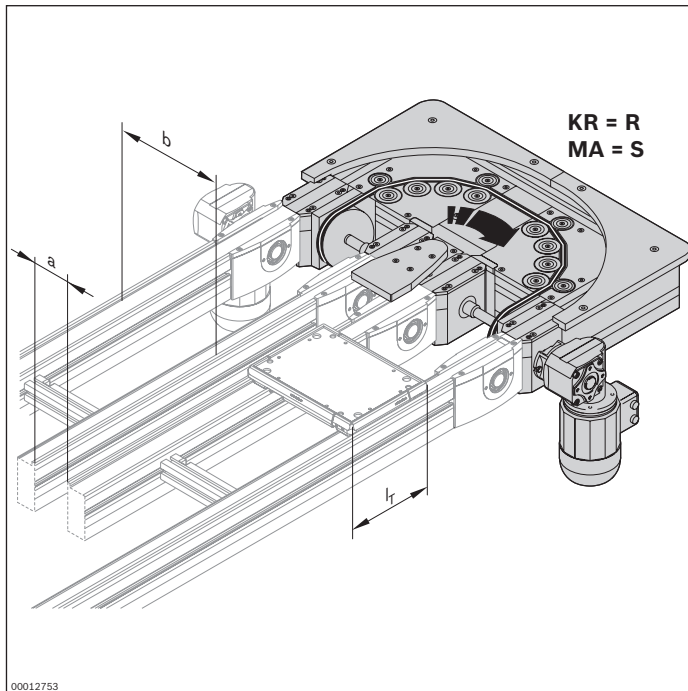
Scope of delivery

- ▶ Curve; complete with drive motor

Condition on delivery

- ▶ Partially assembled
- ▶ Inner guide and motor included

Ordering information



Material number		3842999728
b (mm)	Track width in direction of transport	160; 240; 320; 400
l _T (mm)	Length in direction of transport	160; 240; 320; 400
a (mm)	Distance between conveyors ¹	90; 135
w x l _d (mm x mm)	Combination options	b x l _T 160 x 160; 240 240 x 160; 240; 320 320 x 240; 320; 400 400 x 320; 400
v _N (m/min)	Nominal speed	0; 6; 9; 12; 15; 18
U (V)	Voltage	See motor data, p. 11-24ff
f (Hz)	Frequency	See motor data, p. 11-24ff
AT	Motor connection S = cable/plug K = terminal box	S; K
MA	Motor mounting M = center ²⁾ S = on the outside, on the side	M; S
KR	Curve direction R = right L = left	R; L

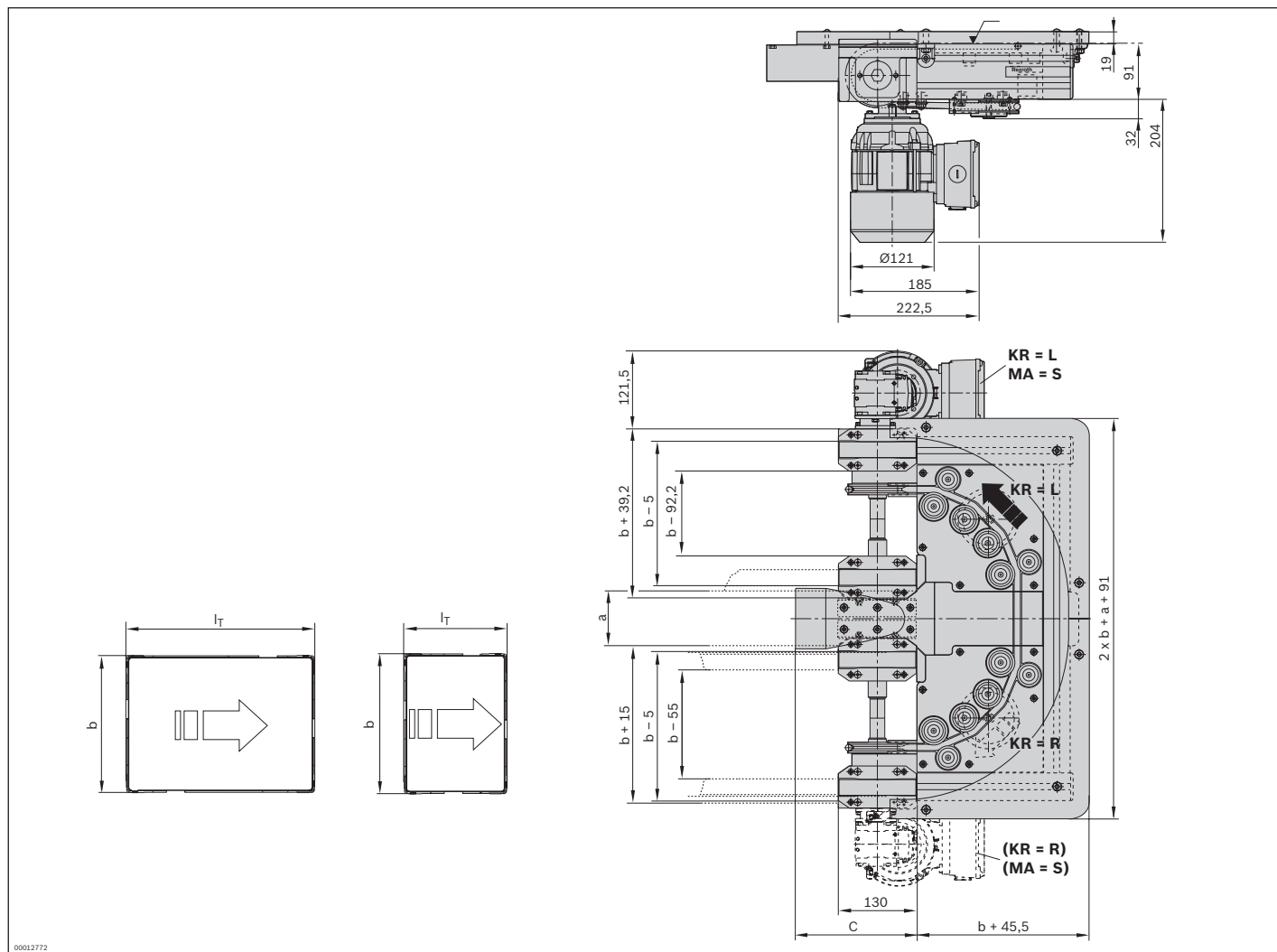
¹⁾ w x l_d is possible in all combinations

²⁾ MA = M only when b ≥ 320 mm

Technical data

Material number		3842999728
Load		
Max. total workpiece pallet weight	m _G	kg 20
Features		
ESD		Yes

Dimensions

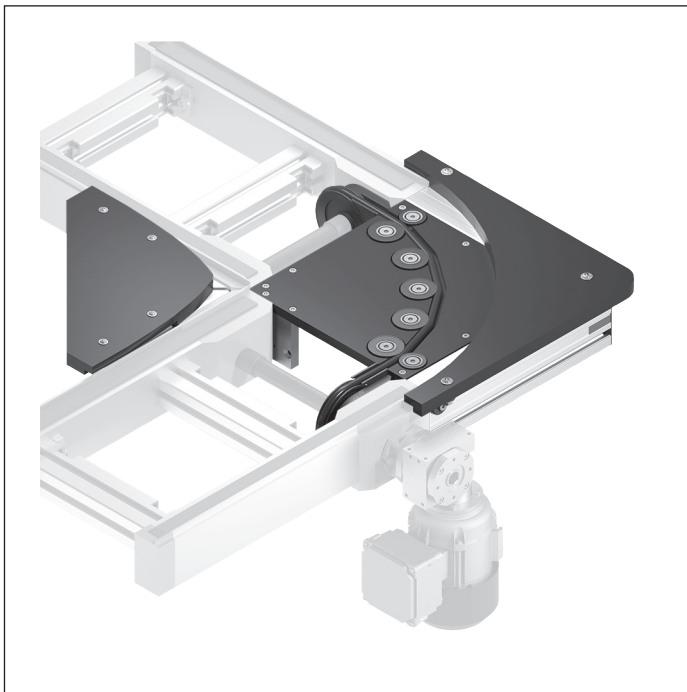


b Track width in direction of transport

l_T Length in conveyor direction

Track width in direction of transport b (mm)	Length in direction of transport l_T (mm)	Dimension C (mm)	Distance between conveyors a (mm)
160	160	170	90; 135
160	240	170	90; 135
240	160	200	90; 135
240	240	200	90; 135
240	320	200	90; 135
320	240	290	90; 135
320	320	290	90; 135
320	400	290	90; 135
400	320	355	90; 135
400	400	355	90; 135

KE 2/O-90 curve



- ▶ 90° curve conveying of the workpiece pallet
- ▶ Suitable for combination with BS 2/K
- ▶ Curve without built-in drive
- ▶ Max. total workpiece pallet weight = 20 kg
- ▶ Conveyor medium: Round belt (suitable for use in an EPA)
- ▶ Can be combined with WT 2 and WT 2/F

Note:

- ▶ Accumulation operation not permitted
- ▶ Drive by subsequent BS 2/K belt section (pulling operation)

In the KE 2/O curves with round belt conveyor medium, the drive is effected by the BS 2/K belt section in the infeed and outfeed sections.

Accessories

Required accessories

- ▶ 2x BS 2/K belt section, see p. 4-21

Delivery notes

Scope of delivery

- ▶ Curve, complete with mounting hardware

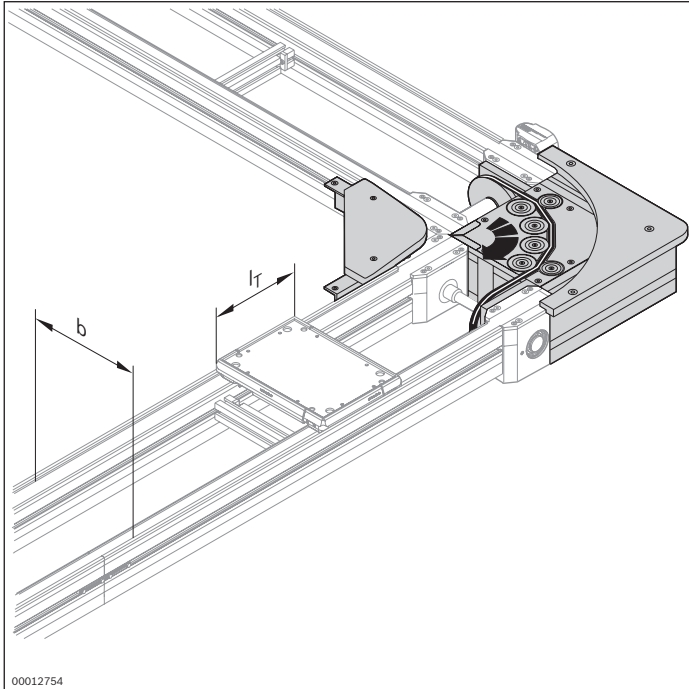
Recommended accessories

- ▶ SZ 2 leg sets/..., see p. 6-2

Condition on delivery

- ▶ Partially assembled
- ▶ Inner guide included

Ordering information

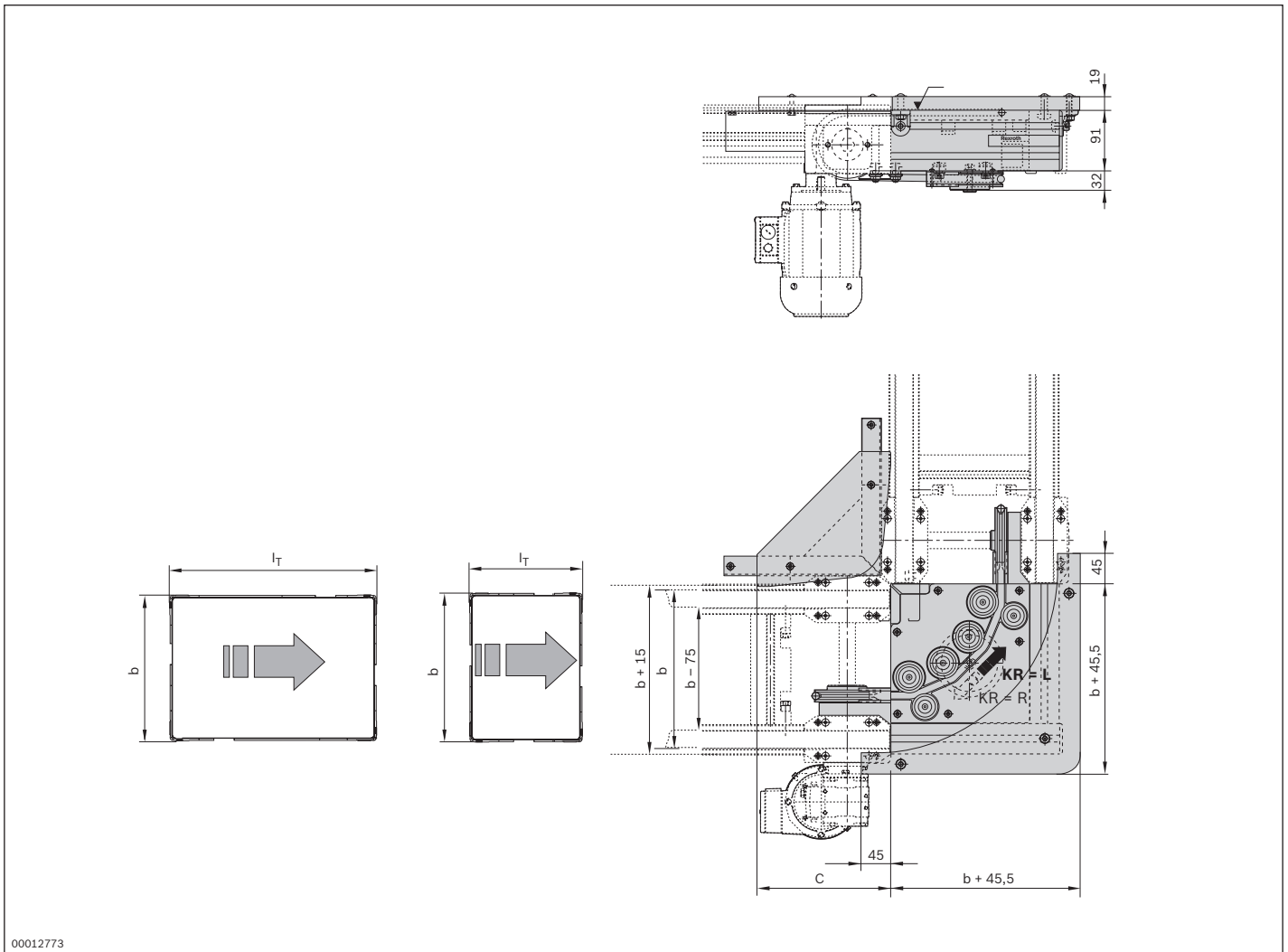


Material number		3842999725
b (mm)	Track width in direction of transport	160; 240; 320; 400
l _T (mm)	Length in direction of transport	160; 240; 320; 400
w x l _T (mm x mm)	Combination options	160 x 160; 240 240 x 160; 240; 320 320 x 240; 320; 400 400 x 320; 400

Technical data

Material number		3842999725
Load		
Max. total workpiece pallet weight	m _G	kg 20
Features		
ESD		Yes

Dimensions



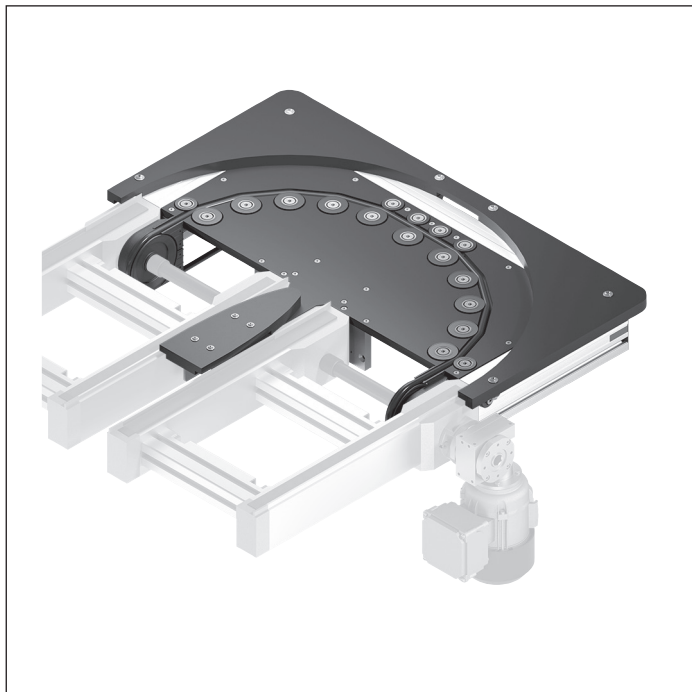
00012773

b Track width in direction of transport

l_T Length in conveyor direction

Track width in direction of transport b (mm)	Length in direction of transport l_T (mm)	Dimension C (mm)
160	160	170
160	240	225
240	160	200
240	240	200
240	320	200
320	240	290
320	320	290
320	400	290
400	320	355
400	400	355

KE 2/O-180 curve



- ▶ 180° curve conveying of the workpiece pallet
- ▶ Suitable for combination with BS 2/K
- ▶ Curve module without built-in drive
- ▶ Max. total workpiece pallet weight = 20 kg
- ▶ Conveyor medium: Round belt (suitable for use in an EPA)
- ▶ Can be combined with WT 2 and WT 2/F

Note:

- ▶ Accumulation operation not permitted
- ▶ Drive by subsequent BS 2/K belt section (pulling operation)

In the KE 2/O curves with round belt conveyor medium, the drive is effected by the BS 2/K belt section in the infeed and outfeed sections.

Accessories

Required accessories

- ▶ 2x BS 2/K belt section, see p. 4-21

Delivery notes

Scope of delivery

- ▶ Curve, complete with mounting hardware

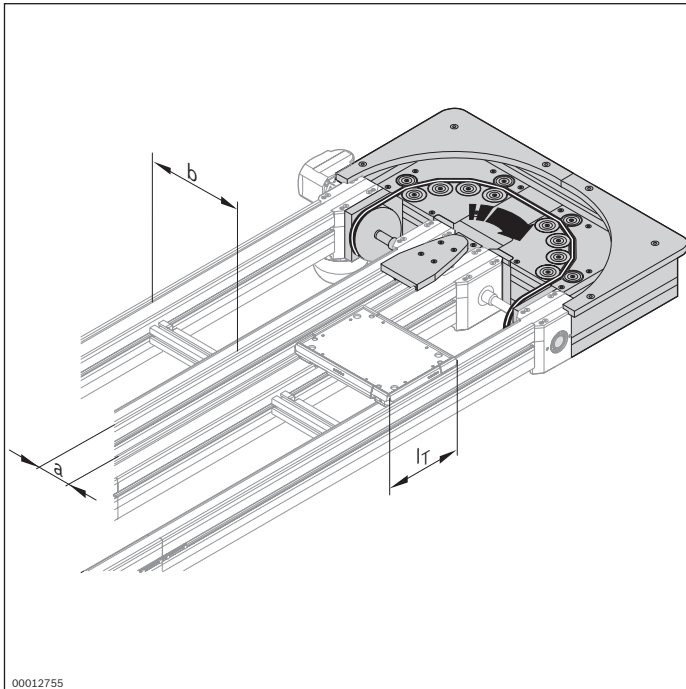
Recommended accessories

- ▶ SZ 2 leg sets/..., see p. 6-2

Condition on delivery

- ▶ Partially assembled
- ▶ Inner guide included

Ordering information



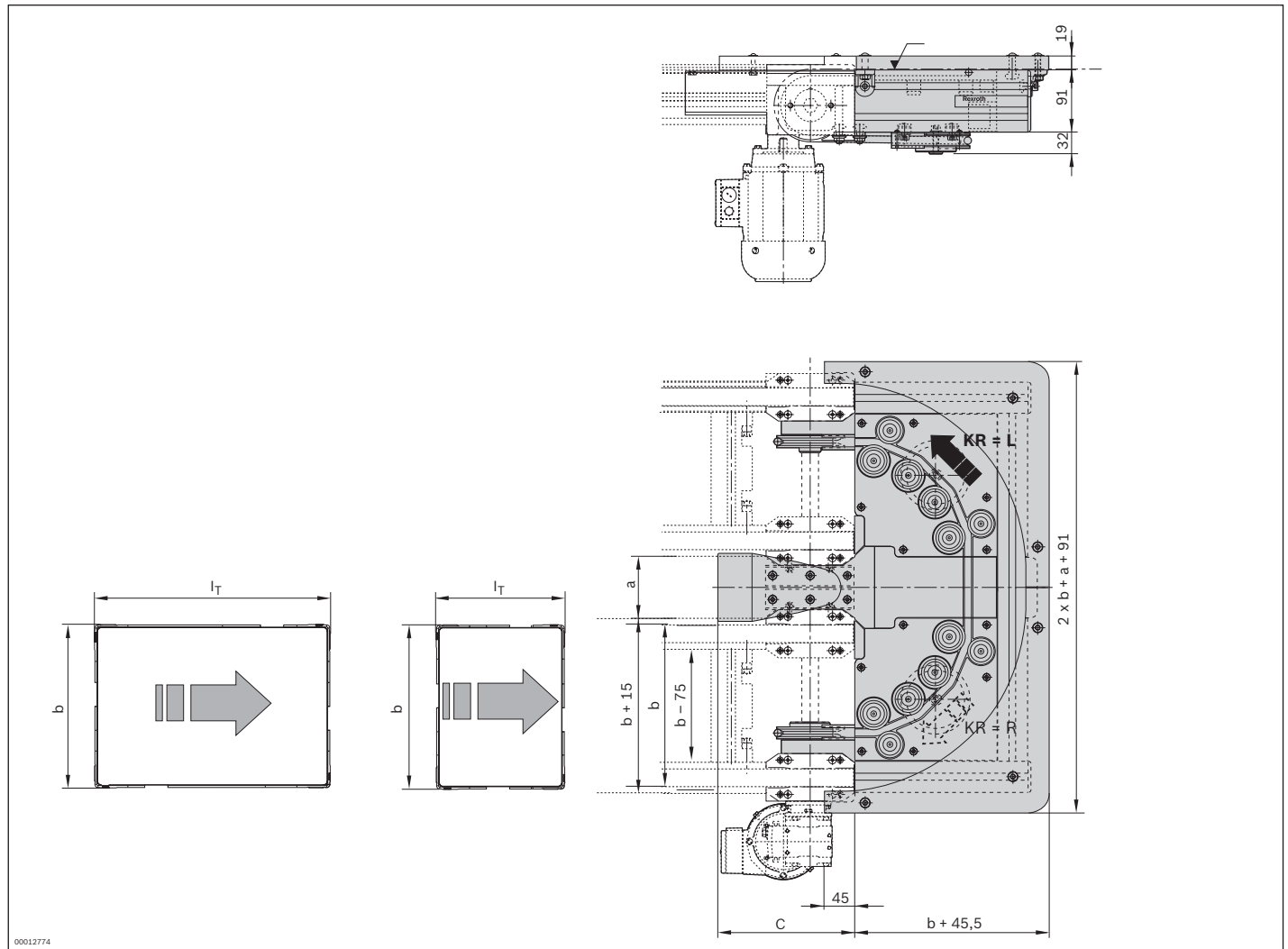
Material number		3842999726
b (mm)	Track width in direction of transport	160; 240; 320; 400
l_T (mm)	Length in direction of transport	160; 240; 320; 400
a (mm)	Distance between conveyors ¹	90; 135
w x l_d (mm x mm)	Combination options	b x l_T 160 x 160; 240 240 x 160; 240; 320 320 x 240; 320; 400 400 x 320; 400

¹⁾ w x l_d is possible in all combinations

Technical data

Material number		3842999726
Load		
Max. total workpiece pallet weight	m_G	kg 20
Features		
ESD		Yes

Dimensions

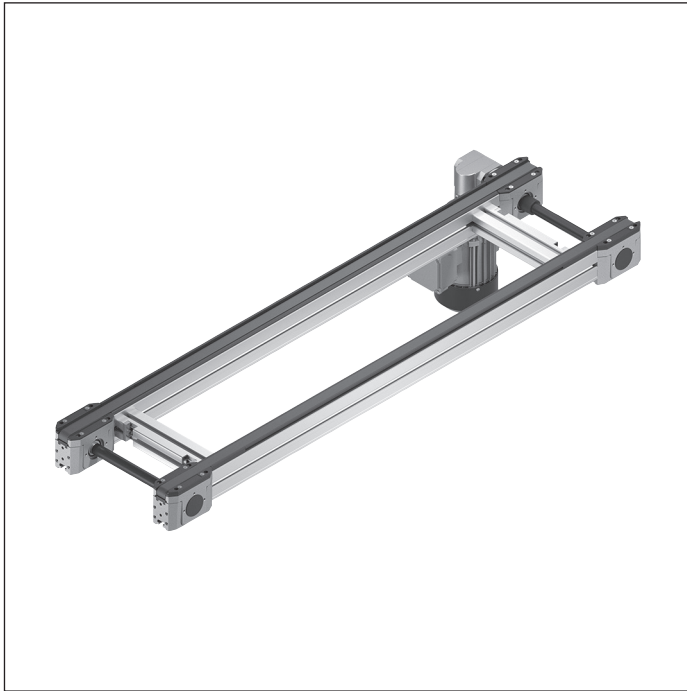


b Track width in direction of transport

l_T Length in conveyor direction

Track width in direction of transport b (mm)	Length in direction of transport l_T (mm)	Dimension C (mm)	Distance between conveyors a (mm)
160	160	170	90; 135
160	240	170	90; 135
240	160	200	90; 135
240	240	200	90; 135
240	320	200	90; 135
320	240	290	90; 135
320	320	290	90; 135
320	400	290	90; 135
400	320	355	90; 135
400	400	355	90; 135

BS 2/K belt section



The BS 2/K belt section is a conveyor section that is ready for operation with the toothed belt conveyor medium and a built-in drive. It is used to drive the KE 2/O curves and to

Delivery notes

Scope of delivery

- ▶ Belt section, complete with drive motor

- ▶ To drive a KE 2/O curve
- ▶ Conveyor medium: Toothed belt (suitable for use in an EPA)
- ▶ Max. permissible section load up to 60 kg in accumulation operation (incl. the driven curve section)
- ▶ Can be combined with WT 2 and WT 2/F

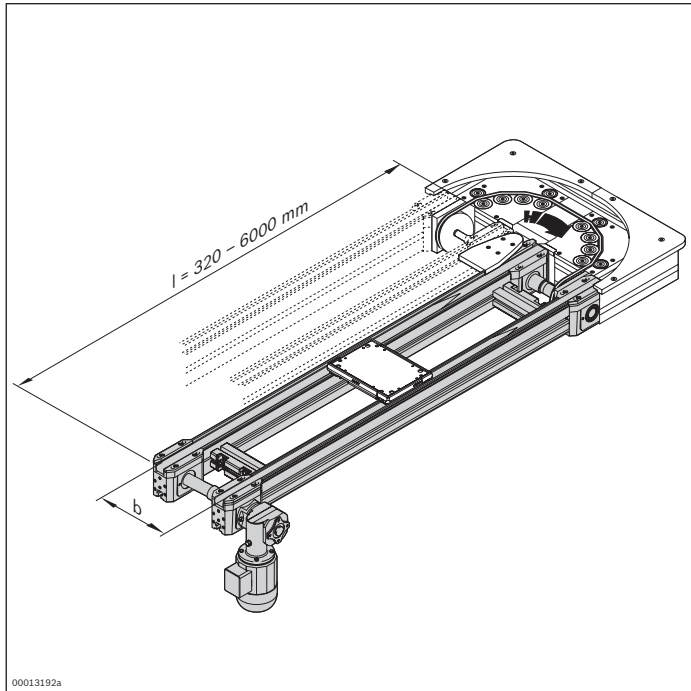
Note: Drive by subsequent BS 2/K belt section (pulling operation).

longitudinally convey workpiece pallets in the infeed and outfeed sections.

Condition on delivery

- ▶ Partially assembled
- ▶ Motor included

Ordering information



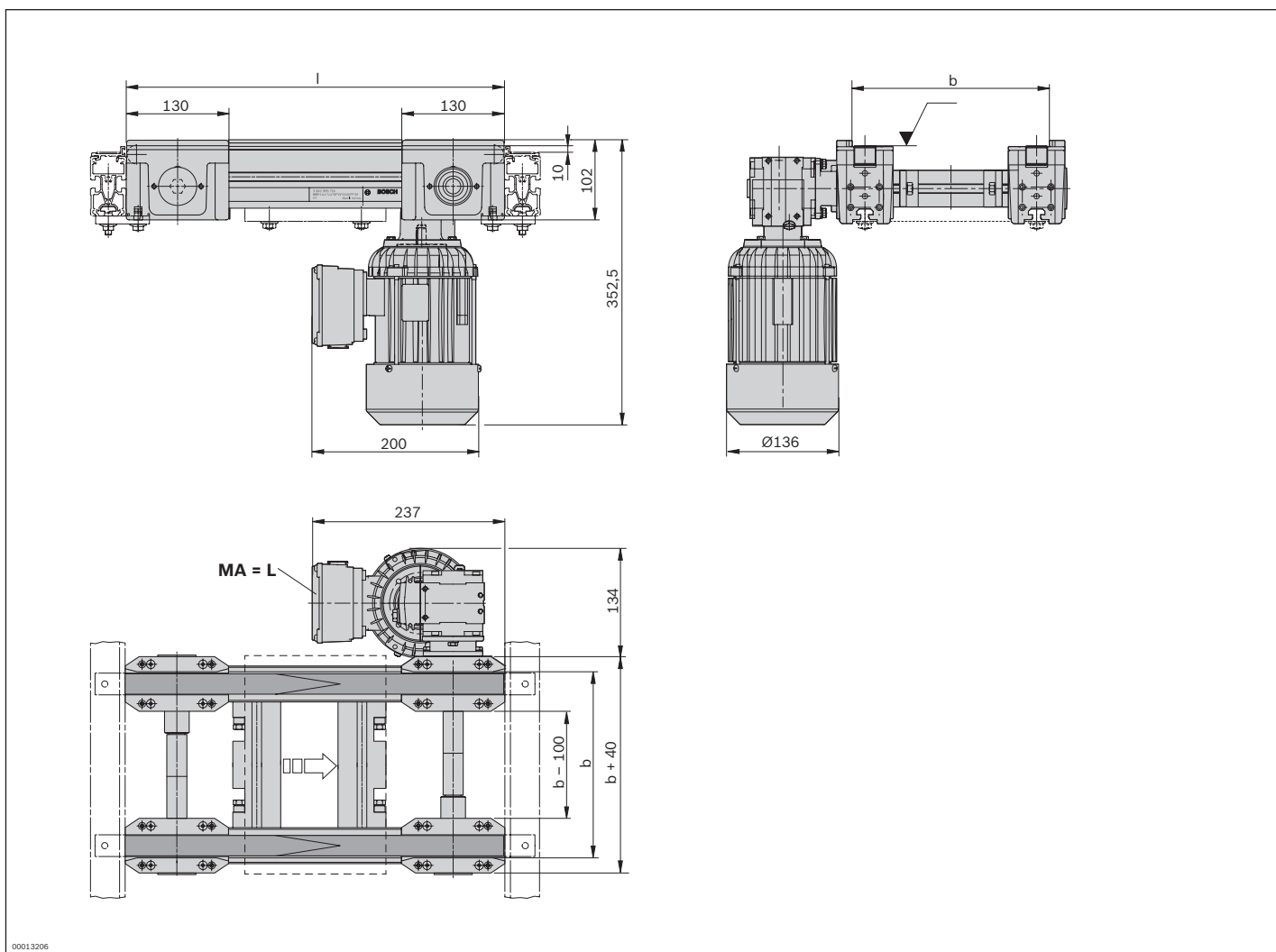
Material number		3842999715
b (mm)	Track width in direction of transport	160; 240; 320; 400; 480
l (mm)	Length	320 ... 6000
v_N (m/min)	Nominal speed	0; 6; 9; 12; 15; 18
U (V)	Voltage	See motor data, p. 11-24ff
f (Hz)	Frequency	See motor data, p. 11-24ff
AT	Motor connection S = cable/plug K = terminal box	S; K
MA	Motor mounting R = right L = left M = center ¹⁾	R; L; M

¹⁾ MA = M only when $b \geq 320 \text{ mm}$

Technical data

Material number		3842999715
Load		
Max. section load in accumulation operation	kg	60
Features		
ESD		Yes

Dimensions



b Track width in direction of transport

l_T Length in conveyor direction

Track width in direction of transport b (mm)	Length l (mm)
160	320 ... 6000
240	320 ... 6000
320	320 ... 6000
400	320 ... 6000
480	320 ... 6000